



CRT18

**SYMPOSIA
SUPPORTER
EXHIBITOR
GUIDE**

Welcome to CRT 2018

Welcome to CRT 2018! This year, CRT promises to be our largest and most robust educational agenda to date, including six tracks of education, over 35 symposia, and six live case sites from around the world. We have also expanded our Exhibit Hall to include four presentation theaters to host special sessions and hands-on training workshops and present our top abstracts and interesting cases that were submitted.

The CRT 2018 agenda is rich with highlights that you do not want to miss. Saturday kicks off a full day of programming and evening symposia events. On Sunday, we will host two abstract cafes and, of course, have the Exhibitor Reception in the evening in the Exhibit Hall. CRT is also proud to announce its keynote speakers for this year: Dolvett Quince on Sunday afternoon at the Women & Heart Symposium, Rep. Donna Edwards on Sunday Evening at the Disparities & Closing the Gap Evening Symposium and, for our Keynote Address, President Barack Obama on Monday evening.

We would like to thank our industry partners for their generous support and sponsorship of CRT 2018. Be sure to visit the Exhibit Hall and Premier Suites across from the Regency Ballroom. There, you will have a number of opportunities for hands-on learning on the simulators and a chance to network, and see the latest technology, devices and pharmacological advances.

Thank you for attending CRT 2018!



Ron Waksman, MD
Course Chairman 2018



***i*IMPACT YOUR PRACTICE**

Saturday | March 3**Power Break Symposia**

Advanced Use of Percutaneous Support Devices in Protected PCI and Cardiogenic Shock Symposia 8

The MitraClip Workshop 10

Left Atrial Appendage Closure Workshop 12

CRT Access 14

FFR & iFR Physiology Workshop 16

Special Sessions

ROTA Fellows Certification Program 18

Meet the Experts: CHIP 18

Fellows Reception 19

Fellows Directors' Symposium 19

Evening Symposia

What's Next in TAVR? Celebrating 15 Years & More 20

Enhancing Clinical and Economic Outcomes with Vascular Access Management Techniques - Fellows Symposium 20

Sunday | March 4**Morning Symposia**

Valve & Structural Heart Revolution For The Surgeon - Breakfast I 21

Precision PCI: The New Physiologic Indices in High Definition 21

Power Break Symposia

Upgrading Coronary Physiologic Approaches: Methods, Myths, and Best Practices 2018 22

Clinical Challenges with NOACs: Ensuring Appropriate and Safe Therapy Across Diverse Patient Populations 22

The Essentials of MitraClip: Treating Mitral Regurgitation, Addressing Patient Selection and Therapy and Complex Valvular Heart Disease 23

The Case for Kengreal (Cangrelor) 23

Women & Heart Symposium - Interventional Cardiology: Prevention, Detection and Treatment 24

Advancing Treatment Strategies Complex Calcified Patients with Orbital Atherectomy 26

Optimizing Outcomes in Challenging Coronary and Peripheral Procedures 26

Special Sessions

CRT 2018 Live Hearts Session 27

Transseptal Training Workshop 30

Advancing Structural Heart Therapy with Artificial Intelligence and Fusion Imaging 28

Modernized PCI: Eliminate Guess Work OCT & FFR (A Hands-on Program) 29

Abstract Luncheon 30

Meet the Experts: CTO 31

Evening Symposia

Disparities & Inequalities in Interventional Cardiology	34
Optimization of Anticoagulation Therapy for STEMI	36

Monday | March 5**Morning Symposia**

The Drug-Coated Balloon Periphery	37
Valve & Structural Heart Revolution for the Surgeon Breakfast	38
Optimizing DAPT Therapy After PCI in High-Bleeding Risk Patients with COBRA PzF NanoCoated Coronary Stent (NCS)	39

Power Break Symposia

Choosing the Right Valve for the Right Patient: LOTUS Edge and ACURATE neo TAVR Systems	40
Meet the Editor	40
The Promise of Next Generations of DES and Metal Resorbable Scaffolds	41
Deep Dive Into Calcified Lesions	42
Myriad Utilities of Stent Graft Intervention	42
Optimization of Intervention in 2018	43
Advancing DES Outcomes with the EluNIR™ Stent	43

Special Sessions

Transseptal Training Workshop	44
Women in Cardiology Performing Complex PCI Live Case from Mount Sinai Medical Center - New York, NY	44
Women in Interventional Cardiology: Strong Position Interventional Cardiology	44
VA Interventional Symposium Cases	45
Young Leaders Roundtable - Invitation Only	46

Evening Symposia

Moving New Technologies to the Interventional Cardiology Arena	47
Pulmonary Embolism: Crisis and Opportunity	47
Managing the Complexity of Patients with A-Fib, Aortic Stenosis, and CAD: A Case-Based Program	48
Keynote Address: President Barack Obama	49

Tuesday | March 6

Morning Symposia

Renal Denervation Treatment
for Resistant Hypertension:
Innovative Technology Update 50

Breakfast: Complex Coronary
Bifurcation Workshop 50

Special Procedures Workshop:
Transcaval and Basilica 51

Power Break Symposia

FDA Luncheon Symposium:
Healthcare Reform and Its
Impact on Innovation 52

Special Sessions

Interventions at the VA
Roundtable: Good Things Are
Happening at the VA 53

Fellows Certification
Program - Cardiology and
Interventional Cardiology
Fellows (NON-CME) 53
(Invitation Only)

CRT Supporter & Exhibitor
Guide 55

Exhibit Hall Map 56

CRT 2018 Exhibitors 57

CRT 2018 Supporters 58

CRT Supporter & Exhibitor
Guide 60

Download the CRT 2018 Meeting App Today!



App Store
Available on the iPhone



Get it on
Google Play



Scan the QR Code or
search for "CRT 2018
Meeting" in the app store



This is the official mobile application for the CRT 2018 Annual Meeting. CRT is one of the world's leading interventional cardiology conferences. This conference gives attendees a great opportunity to share ideas and knowledge, collaborate on interventional cardiology solutions, receive interventional cardiology training and network with other professionals.

Features

- ▶ Allows you to see the complete up-to-date CRT agenda
- ▶ Build your own personalized agenda
- ▶ Connect with other attendees
- ▶ Ask questions directly to moderators in sessions
- ▶ Navigate the Exhibit Hall
- ...and so much more!



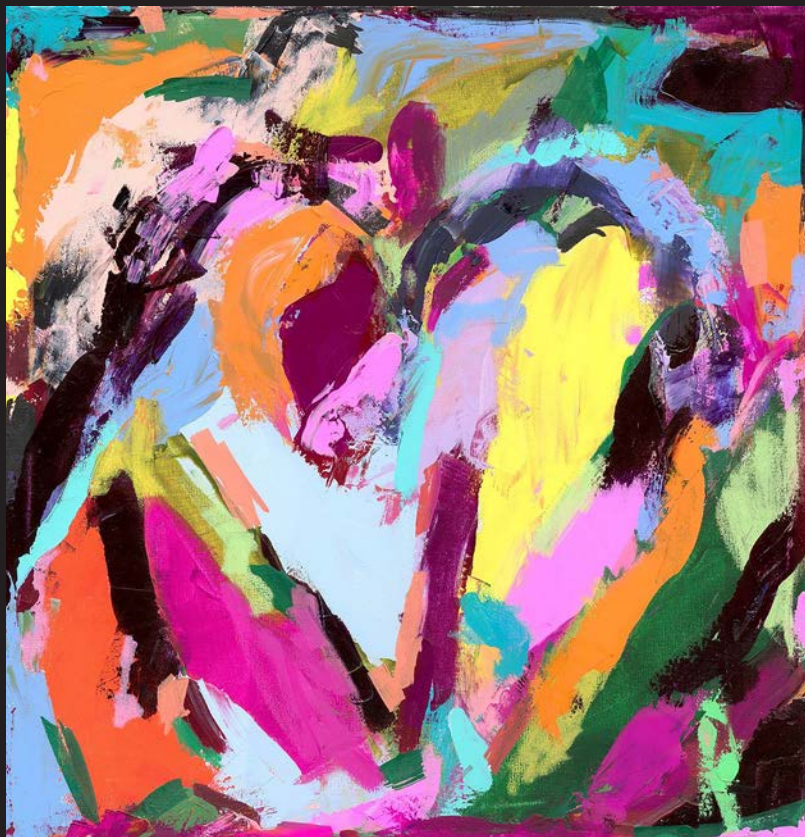
www.crtmeeting.org

Sponsored by Medtronic

Women in Cardiology Performing Complex PCI

Time: 1:30 PM – 2:00 PM

Location: Regency Ballroom



Artwork By Tali Waksman donated to Dr. Annapoorna Kini, Live Case Operator for the Women in Cardiology Performing Complex PCI session

Live Case from Mount Sinai Medical Center - New York, NY

Advanced Use of Percutaneous Support Devices in Protected PCI & Cardiogenic Shock Symposia

Time: 11:30 AM - 5:00 PM

Location: Palladian Ballroom

Sponsored by Abiomed, Inc.

CME Status: NON-CME

Welcome & Introduction

Session Moderators: Hiram G. Bezerra, MD, PhD; Seth Bilazarian, MD

11:30 AM Lunch

12:00 PM Welcome & A Historical and Futuristic Look at ABIOMED'S Impella
Seth Bilazarian, MD

12:30 PM What is Protected PCI?
Hiram G. Bezerra, MD, PhD

12:50 PM What is the Appropriate Revascularization Strategy?
Rajan Patel, MD

1:05 PM Preventing AKI: Using Impella in Patients with Renal Dysfunction
Mike Flaherty, MD

Case Presentations

Session Moderators: Hiram G. Bezerra, MD, PhD; Seth Bilazarian, MD

1:20 PM Complex Anatomy & Atherectomy supported PCI
Salvatore F. Mannino, DO, FACC, FSCAI

1:35 PM Last Remaining Conduit or UPLM
Salvatore F. Mannino, DO, FACC, FSCAI

1:50 PM Break

Case Presentations on Protected PCI (CHIP) and Access Techniques

Session Moderators: Seth Bilazarian, MD; Navin K. Kapur, MD, FSCAI

2:05 PM Axillary Insertion of Impella
Rajiv Tayal, MD, FSCAI

2:20 PM Radial PCI with MCS Support
Hiram G. Bezerra, MD, PhD

2:35 PM Essential Elements for Building a Leading Protected PCI Program
Paul D. Mahoney, MD

Cardiogenic Shock: A Call to Action

Session Moderators: Seth Bilazarian, MD; Navin K. Kapur, MD, FSCAI

3:00 PM Pharmacologic and Device-Based Approaches to Acute Heart Failure and Cardiogenic Shock: Treating Patients with Pressors, IABP, Impella and ECMO
Daniel Burkhoff, MD, PhD

3:20 PM Using Mechanical Circulatory Support in AMI Cardiogenic Shock: Why the CSI Initiative is Improving Survival: Time for a National Movement
William W. O'Neill, MD, FSCAI

3:40 PM Door-to-Unloading: A New Quality Metric in STEMI
Navin K. Kapur, MD, FSCAI

4:00 PM Critical Information Gained from Using a RHC
Salvatore F. Mannino, DO, FACC, FSCAI

Case Presentations on CGS

Session Moderators: Seth Bilazarian, MD; Navin K. Kapur, MD, FSCAI

- 4:25 PM Percutaneous Support Prior to PCI**
William W. O'Neill, MD, FACC
- 4:35 PM Right and Left Ventricular Support**
Navin K. Kapur, MD, FSCAI
- 4:55 PM Closing Remarks**
Seth Bilazarian, MD
- 5:00 PM Adjourn**

THE MITRACLIP WORKSHOP

Time: 12:00 PM - 5:10 PM

Location: Blue Pre-Function

Supported by an educational grant from Abbott

CME Status: CME

Setting the Stage - Part I

Session Moderators: Ted Feldman, MD, MSCAI; Scott Lim, MD; Brian Whisenant, MD

12:00 PM MitraClip Step-By-Step Procedure Review
Peter S. Fail, MD

12:10 PM An Inspiring MitraClip Case
Mohammad Sarraf, MD; Brian Whisenant, MD

12:20 PM Panel Discussion: An Inspiring MitraClip Case
Mohammad Sarraf, MD; Brian Whisenant, MD

12:25 PM How to Start (and Run) a Successful Mitral Valve Center
Paul Sorajja, MD, FSCAI

12:35 PM Panel Discussion with Question and Answer: Setting the Stage - Part I
Ted Feldman, MD, MSCAI; Scott Lim, MD; Peter S. Fail, MD; Mohammad Sarraf, MD; Paul Sorajja, MD, FSCAI; Brian Whisenant, MD

Setting The Stage - Part II

Session Moderators: Peter C. Block, MD; Paul A. Grayburn, MD; Scott Lim, MD

12:45 PM Which Patients Are Ideal for MitraClip Procedures? Which Are Difficult? Which Are No Go?
Ted Feldman, MD, MSCAI

12:55 PM Panel Discussion
Ted Feldman, MD, MSCAI; Saibal Kar, MD, FSCAI; Molly Szerlip, MD; Ramon Quesada, FACP, FACC, FSCAI

1:00 PM Echo for MitraClip - Evaluation Before & After
Paul A. Grayburn, MD

1:10 PM Panel Discussion
Ted Feldman, MD, MSCAI; Saibal Kar, MD, FSCAI; Molly Szerlip, MD; Ramon Quesada, FACP, FACC, FSCAI

1:15 PM Mitral Stenosis Post-Clip – How to Avoid/How to Treat
Molly Szerlip, MD

1:25 PM How to Handle Single Leaflet Clip Detachment
Michael J. Rinaldi, MD

1:35 PM Panel Discussion
Ted Feldman, MD, MSCAI; Saibal Kar, MD, FSCAI; Molly Szerlip, MD; Ramon Quesada, FACP, FACC, FSCAI

1:40 PM Treatment of Failed Surgical Repair with MitraClip
Saibal Kar, MD, FSCAI

1:50 PM Panel Discussion
Ted Feldman, MD, MSCAI; Saibal Kar, MD, FSCAI; Molly Szerlip, MD; Ramon Quesada, FACP, FACC, FSCAI

1:55 PM Mitral Valve Repair with MitraClip in Complex Anatomy Beyond the A2-P2 Paradigm
Ramon Quesada, MD, FACP, FACC, FSCAI

2:05 PM Panel Discussion
Ted Feldman, MD, MSCAI; Saibal Kar, MD, FSCAI; Molly Szerlip, MD; Ramon Quesada, FACP, FACC, FSCAI

2:10 PM Mitral Clip Complication
Scott Lim, MD

2:20 PM Panel Discussion
Ted Feldman, MD, MSCAI; Saibal Kar, MD, FSCAI; Molly Szerlip, MD; Ramon Quesada, FACP, FACC, FSCAI

MitraClip: Show Me The Data

Session Moderators: James B. Hermiller, MD, FACC, FSCAI; Howard C. Herrmann, MD, FACC, MSCAI; Scott Lim, MD

- 2:25 PM Mitral Clip – Review of the Data From the EVEREST Trials**
Ted Feldman, MD, MSCAI
- 2:35 PM MitraClip Outcomes from the STS TVT Registry**
Paul Sorajja, MD, FSCAI
- 2:45 PM Panel Discussion**
Stephan Bertog, MD; Ted Feldman, MD, MSCAI; Brijeshwar S. Maini, MD; Francesco Maisano, MD; Paul Sorajja, MD, FSCAI; Molly Szerlip, MD; Corrado Tamburino, PhD, FSCAI
- 2:55 PM Data on MitraClip from Europe**
Stephan Bertog, MD
- 3:05 PM Lesson from a Ten-Year Experience with MitraClip**
Corrado Tamburino, PhD, FSCAI
- 3:20 PM Panel Discussion**
Stephan Bertog, MD; Ted Feldman, MD, MSCAI; Brijeshwar S. Maini, MD; Francesco Maisano, MD; Paul Sorajja, MD, FSCAI; Molly Szerlip, MD; Corrado Tamburino, PhD, FSCAI
- 3:30 PM How to Handle Complex Degenerative Pathology**
Francesco Maisano, MD
- 3:40 PM A Really Complicated MitraClip Case**
Molly Szerlip, MD
- 3:50 PM TMVr - Next Generation Leaflet Repair Technologies**
Paul Sorajja, MD, FSCAI
- 4:05 PM Panel Discussion**
Stephan Bertog, MD; Ted Feldman, MD, MSCAI; Brijeshwar S. Maini, MD; Francesco Maisano, MD; Paul Sorajja, MD, FSCAI; Molly Szerlip, MD; Corrado Tamburino, PhD, FSCAI
- 4:15 PM MitraClip for Tricuspid Regurgitation - The Next Frontier**
Scott Lim, MD
- 4:25 PM Panel Discussion**
Stephan Bertog, MD; Ted Feldman, MD, MSCAI; Brijeshwar S. Maini, MD; Francesco Maisano, MD; Paul Sorajja, MD, FSCAI; Molly Szerlip, MD; Corrado Tamburino, PhD, FSCAI
- 4:30 PM MitraClip When You Can't See What You're Doing By TEE**
Brijeshwar S. Maini, MD
- 4:40 PM Where are we with Functional MR Today?**
James B. Hermiller, MD, FACC, FSCAI
- 4:55 PM Question and Answer with the Experts**
Scott Lim, MD; Peter C. Block, MD; Ted Feldman, MD, MSCAI; Paul A. Grayburn, MD; James B. Hermiller, MD, FACC, FSCAI; Howard C. Herrmann, MD, FACC, SCAI; Ramon Quesada, MD, FACP, FACC, FSCAI
- 5:10 PM Adjourn**

Left Atrial Appendage Closure Workshop

Time: 12:00 PM - 4:45 PM

Location: Diplomat Ballroom

Supported by an educational grant from Boston Scientific Corporation

CME Status: CME

Essentials of LAA Closure

Session Moderators: Saibal Kar, MD, FSCAI; Saurabh Sanon, MD, FACC; Ramon Quesada, MD, FACP, FACC, FSCAI

- 12:00 PM Live Case: MedStar Washington Hospital Center, Washington, DC**
Operator: Manish H. Shah, MD;
- Panel: Stephan Bertog, MD; Mehmet Cilingiroglu, MD; Sameer A. Gafoor, MD; William A. Gray, MD, FSCAI; Chaim Yosefy, MD
- 12:45 PM How to Perform a Successful Transseptal Puncture**
Zoltan G. Turi, MD, MSCAI
- 12:55 PM CTA is Best for LAA Procedural Planning**
Michael J. Rinaldi, MD
- 1:05 PM WATCHMAN Device - How to Implant with Conscious Sedation**
Stephan Bertog, MD
- 1:15 PM LAAC with the WATCHMAN Device: What You Should Watch Out For**
Saibal Kar, MD, FSCAI
- 1:25 PM LAAC Echo Essential Pre- and Post-Procedure**
Chaim Yosefy, MD
- 1:35 PM LAA: Update on LAAO Closure Studies What Does the Post-Marketing Data Tell Us?**
Mark Carlson, MD
- 1:45 PM How to Develop a Successful LAAC Program**
Brijeshwar S. Maini, MD
- 1:55 PM How to Screen Patients for Left Atrial Appendage Closure**
Maurice Buchbinder, MD, FSCAI
- 2:05 PM Imaging Assisted LAA Deployment: What Are the Essentials?**
Brijeshwar S. Maini, MD
- 2:15 PM Advantages of Fusion Imaging for LAAO**
Carlos E. Ruiz, MD, PhD, MSCAI
- 2:25 PM The WATCHMAN Procedure Description: Step-By-Step**
Brijeshwar S. Maini, MD
- 2:35 PM LAA Closure with WATCHMAN Device in Complex Anatomy**
Ramon Quesada, MD, FACP, FACC, FSCAI
- 2:45 PM Cost-Effectiveness of LAA Closure Versus NOAC**
Sameer A. Gafoor, MD
- 2:55 PM Reimbursement for LAA Closure: What You Need to Know**
Megan Coylewright, MD, MPH
- 3:05 PM LAA WATCHMAN Next Clinical Trials**
Maurice Buchbinder, MD, FSCAI
- 3:15 PM How to Increase Your Patient Volume and Screening Efficiency**
Ramon Quesada, FACP, FACC, FSCAI
- 3:25 PM Case Presentation: Matching the WATCHMAN Delivery Sheath to the LAA Anatomy**
Issam Moussa, MD
- 3:35 PM Afternoon Break**

Essentials of LAA Closure II

Session Moderators: Sameer A. Gafoor, MD; Michael J. Rinaldi, MD

- 3:45 PM Diagnosing and Treating Access Site Complications**
Michael J. Singh, MD, FACS
- 3:55 PM Review of Alternative Devices for LAA Closure**
Sameer A. Gafoor, MD
- 4:05 PM Assessment and Management of Residual Leaks After LAA Closure**
George S. Hanzel, MD
- 4:15 PM Anticoagulant Regimens Post-LAA Closure**
Michael J. Rinaldi, MD
- 4:25 PM Panel Discussion with Question & Answer Session: Essentials of LAA Closure**
Sameer A. Gafoor, MD; Michael J. Rinaldi, MD; Megan Coylewright, MD, MPH;
George S. Hanzel, MD; Brijeshwar S. Maini, MD; Issam Moussa, MD; Carlos E.
Ruiz, MD, PhD, MSCAI; Michael J. Singh, MD FACS; Chaim Yosefy, MD
- 4:45 PM Adjourn**

CRT Access

Time: 12:00 PM - 5:25 PM

Location: Empire Ballroom

Sponsored by Terumo Interventional Systems

CME Status: NON-CME

Session One: Radial and Femoral for Complex PCI

Session Moderators: Nelson L. Bernardo, MD, FSCAI; Walter Tan, MD, MS

12:00 PM Lunch

12:30 PM Welcome and Introduction
Nelson L. Bernardo, MD, FSCAI

12:35 PM Difficult and Torturous Radial Artery – Tips & Tricks
Augusto Pichard, MD, FSCAI

12:45 PM Common Femoral Artery Access – Using Ultrasound Guidance
Walter Tan, MD, MS

12:55 PM Radial Artery Access – “Through & Through” Seldinger Technique
Samir B. Pancholy, MD, FSCAI

1:05 PM Radial Artery Access – Anterior Wall Modified Seldinger Technique
Ronald P. Caputo, MD, FSCAI

1:15 PM Ulnar Artery Access – Tips & Tricks
Edo Kaluski, MD, FSCAI

1:25 PM Right Radial Versus left Radial Access
Ion S. Jovin, MD

1:35 PM Using the Radial Artery for Endovascular Intervention
William B. Bachinsky, MD, FSCAI

1:45 PM PRODUCT SHOWCASE & BREAK

2:05 PM Radial Artery Hemostasis and Avoiding Radial Artery Occlusion
Ian C. Gilchrist, Sr., MD, FSCAI

2:15 PM Antecubital Venous Access for Right Heart Procedures
Edo Kaluski, MD, FSCAI

2:25 PM Retroperitoneal Bleeding CT scan and Vascular Surgery Consultation
Luis Guzman, MD, FACC, FSCAI

2:35 PM The CLOSER Trial – US Multicenter Experience on the CLOSER VSS
S. Chiu Wong, MD, FSCAI, FACC

2:45 PM Managing Complications of Radial Access
Itsik Ben-Dor, MD

2:55 PM Panel Discussion with Audience Question & Answer: Radial or Femoral for Complex PCI
William B. Bachinsky, MD, FSCAI; Itsik Ben-Dor, MD; Ronald P. Caputo, MD, FSCAI; Ian C. Gilchrist, Sr., MD, FSCAI; Luis Guzman, MD, FACC, FSCAI; Ion S. Jovin, MD; Edo Kaluski, MD, FSCAI; Samir B. Pancholy, MD, FSCAI; Augusto Pichard, MD, FSCAI; S. Chiu Wong, MD, FSCAI, FACC

Session Two: Alternative Access for Large Bores

Session Moderators: Mark C. Bates, MD, DSc, FSCAI; Nelson L. Bernardo, MD, FSCAI; Adam B. Greenbaum, FACC, FSCAI

- 3:15 PM** **Direct Carotid Artery Puncture**
Michael Wholey, MD, MBA, FSCAI
- 3:25 PM** **Subclavian and Axillary Artery Cannulation for Large Bore Access**
Christian Shults, MD
- 3:35 PM** **Caval-Aortic Access**
Adam B. Greenbaum, FACC, FSCAI
- 3:45 PM** **Expandable Sheath for Small Iliac Artery**
Maurice Buchbinder, MD, FSCAI
- 3:55 PM** **Special Access Considerations for Impella**
Adam B. Greenbaum, FACC, FSCAI
- 4:05 PM** **Transseptal Access**
Zoltan G. Turi, MD, MSCAI
- 4:15 PM** **Access Site Management Strategies, Including New Large-Hole Closure Devices**
Nicolas M. Van Mieghem, MD, PhD

Session Three: Access for CLI

Session Moderators: Nelson L. Bernardo, MD, FSCAI; Adam B. Greenbaum, FACC, FSCAI

- 4:27 PM** **Antegrade Common Femoral Artery Access**
Nelson L. Bernardo, MD, FSCAI
- 4:36 PM** **SFA Access for TASC D Lesions**
Aravinda Nanjundappa, MD, FSCAI
- 4:45 PM** **Retrograde Distal Pedal Artery Access – Using Fluoro & Road-Mapping**
Robert E. Beasley, MD, FSIR, FSCAI
- 4:54 PM** **Retrograde Distal Pedal Artery Access – Using Ultrasound Guidance**
Nelson L. Bernardo, MD, FSCAI
- 5:03 PM** **Panel Discussion With Audience Question & Answer: Access for CLI**
Aravinda Nanjundappa, MD, FSCAI; Robert E. Beasley, MD, FSIR, FSCAI
- 5:20 PM** **Closing Remarks**
Walter Tan, MD, MS
- 5:25 PM** **Adjourn**

FFR & iFR Coronary Physiology Workshop

Time: 12:00 PM - 5:45 PM

Location: Hampton Ballroom

Supported by an educational grant from Philips IGT - D

CME Status: CME

The Fundamental Concepts: Pressure, Flow and Ischemia

Session Moderators: Justin E. Davies, MD, PhD; Morton J. Kern, MD, MSCAI

12:00 PM Lunch

12:30 PM **The Pressure Flow Relationship, CFR, FFR and iFR Underpinnings**
Morton J. Kern, MD, MSCAI

12:40 PM **FFR and iFR: Need for Physiology After ORBITA**
Justin E. Davies, MD, PhD

12:50 PM **Microvascular Resistance in Stable CAD and ACS: What's the Difference and What's the Value?**
William F. Fearon, MD

1:00 PM **NL iFR/ABN FFR - High Flow, Low FFR: Is This Ischemia?**
Christopher M. Cook, MD

Technical Issues and Artifacts of Translesional Pressure and Flow Measurements

Session Moderators: Justin E. Davies, MD, PhD; Morton J. Kern, MD, MSCAI

1:10 PM **Are We Safe to Defer Using Conventional iFR/FFR Cut-Points?**
Javier Escaned, MD, PhD

1:20 PM **Hyperemia and Alternatives to Hyperemia**
Jeffrey W. Chambers, MD, FSCAI, FACC

1:30 PM **Update on Resting Gradients**
Allen Jeremias, MD, FSCAI

Clinical Outcomes: FFR, iFR, IMR, CFR

Session Moderators: Javier Escaned, MD, PhD; William F. Fearon, MD

1:40 PM **Collateral Flow: Contribution to Outcomes**
Carlo Di Mario, MD

1:50 PM **The Role of FFR After POT in Patients with Coronary Bifurcation Lesions**
Massoud Leesar, MD

2:00 PM **FFR and Multivessel CAD: Improves Patient Selection for CABG**
William F. Fearon, MD

2:10 PM **How does iFR/FFR, DES and IVUS Improve Outcomes in Complex Multi-Vessel Disease?**
Javier Escaned, MD, PhD

2:20 PM **iFR and Clinical Outcomes: Define-FLAIR and iFR SwedeHeart and Beyond**
Justin E. Davies, MD, PhD

Complex Anatomic Subsets and use of FFR for best Results

Session Moderators: Carlo Di Mario, MD; Jasvinder Singh, MD

- 2:30 PM** **Left Main: Simple and Complex**
Habib Samady, MD, FACC, FSCAI
- 2:40 PM** **Image Based FFR-Angiography: The Tech Concept and Clinical Validation in CAD Patients**
Ran Kornowski, MD
- 2:50 PM** **Serial Lesion Assessment: Best Methods, and Predictions from DEFINE-PCI**
Carlo Di Mario, MD
- 3:00 PM** **Is There a Role of iFR/FFR in ISR and SVG?**
Nils Johnson, MD, MS

Acute Coronary Syndromes and Coronary Physiology

Session Moderators: Carlo Di Mario, MD; Michael C. Kim, MD; Jasvinder Singh, MD

- 3:10 PM** **The Role of FFR in ACS**
Pieter C. Smits, PhD, FESC
- 3:20 PM** **FFR-Guided NSTEMI for Culprit and Non-Culprit Lesions**
Jasvinder Singh, MD
- 3:30 PM** **FFR as a Continuum of Risk**
Nils Johnson, MD, MS
- 3:40 PM** **FFR/iFR Post PCI: Prognostic Value**
Barry Uretsky, MD
- 3:50 PM** **Contrast FFR: Fast, Easy, but Reliable?**
Rajesh V. Swaminathan, MD

iFR in ACS

Session Moderators: Rajesh V. Swaminathan, MD; Guy Wiegold, MD

- 4:00 PM** **How to Best Approach Combined Assessment of Epicardial Vessels and the Microcirculation?**
Javier Escaned, MD, PhD
- 4:10 PM** **FFR, iFR, CFR, HSR and Others - Sorting Through the Markers of Ischemia**
Bruce Samuels, MD
- 4:20 PM** **Fractional Flow Reserve in Acute Coronary Syndrome Setting**
Enrico Cerrato, MD

Technology Advances @ Parade of new FFR Systems

Session Moderators: Hector M. Garcia-Garcia, MD, PhD; Habib Samady, MD, FACC, FSCAI

- 4:30 PM** **Non-Invasive FFR with CT: Systematic Assessment of the Literature**
Christopher M. Cook, MD
- 4:39 PM** **FFRCT Will Change Our Daily Clinical Practice**
Takashi Akasaka, MD, PhD
- 4:48 PM** **New Wire Technology**
Edo Kaluski, MD, FSCAI
- 4:57 PM** **ACIST: Update from Validation Studies**
Michael C. Kim, MD
- 5:06 PM** **COMET**
William F. Fearon, MD
- 5:15 PM** **QVA FFR**
Hector M. Garcia-Garcia, MD, PhD
- 5:24 PM** **Opsens FFR Technology and Clinical Data Update**
Morton J. Kern, MD, MSCAI
- 5:33 PM** **Panel Discussion: Review of Clinical Trials @ Parade of New FFR Systems**
Hector M. Garcia-Garcia, MD, PhD; Habib Samady, MD, FACC, FSCAI; Takashi Akasaka, MD, PhD; Christopher M. Cook, MD; William F. Fearon, MD; Edo Kaluski, MD, FSCAI; Morton J. Kern, MD, MSCAI; Michael C. Kim, MD
- 5:45 PM** **Adjourn**

Rotablator™ Fellows Certification Program

Time: 10:00 AM - 12:00 PM

Location: Executive Ballroom

Sponsored by Boston Scientific Corporation

CME Status: NON-CME

Course Directors: Arthur C. Lee, MD, FACC, FSCAI; Jasvinder Singh, MD

10:00 AM Module 1: Welcome and Introduction

Module 2: Disposables and Hardware

Module 3: Clinical Results

Module 4: Indications and Case Selection

Module 5: Technique Module

Module 6: Management of Complications

Final Assessment

11:30 AM Wrap Up and Sign Up for Wet Heart Training

12:00 PM Adjourn

Meet the Experts: (CHIP)

Time: 5:00 PM - 6:00 PM

Location: Marquee Lounge

Supported by an educational grant from Boston Scientific Corporation

CME Status: CME

Session Moderators: Jasvinder Singh, MD, Jeffrey W. Chambers, MD, FSCAI, FACC;
Akiko Maehara, MD

5:00 PM Case Presentations #1
Jasvinder Singh, MD

5:15 PM Case Presentations #2
Jeffrey W. Chambers, MD, FSCAI, FACC

5:30 PM Case Presentations #3
Akiko Maehara, MD

5:45 PM Group Discussion - CHIP
Jasvinder Singh, MD; Jeffrey W. Chambers, MD, FSCAI, FACC; Akiko Maehara, MD

6:00 PM Adjourn

Fellows Reception

Time: 5:30 PM - 6:30 PM

Location: Birdcage Walk (Faculty Lounge)

Sponsored by Cook Medical

CME Status: NON-CME



Fellows Directors' Symposium

Time: 6:00 PM - 7:30 PM

Location: Executive Ballroom

Supported by an educational grant from Boston Scientific Corporation

CME Status: NON-CME

Session Moderators & Panelists: Michael W. Cleman, MD; William O. Suddath, MD; R. David Anderson, MD; Khagendra Dahal, MD; Ravi Dave, MD; Mohamed A. Effat, MD; Tim A. Fischell, MD, FSCAI; John Jayne, MD; Michael C. Kim, MD; John P. Reilly, MD; Scott W. Shurmer, MD; Paul Sorajja, MD, FSCAI; Anwar Tandar, MD; Sergio Waxman, MD, MBA; Robert L. Wilensky, MD; Steven R. Bailey, MD, MSCAI; Leonardo C. Clavijo, MD, PhD, FSCAI; Luis Guzman, MD, FACC, FSCAI; James B. Hermiller, MD, FACC, FSCAI; Saibal Kar, MD, FSCAI; Neal S. Kleiman, MD, FACC, FSCAI; Ehtisham Mahmud, MD, FACC, FSCAI; Adhir Shroff, MD, MPH

6:00 PM Dinner

6:30 PM **How Industry can Impact Fellows Training**
Tim A. Fischell, MD, FSCAI

6:40 PM **How to Incorporate Research Into the Fellowship Program - Is it Necessary?**
Robert L. Wilensky, MD

6:50 PM **Should the Fellowship Curriculum Mandate Structural and Endovascular Training**
Paul Sorajja, MD, FSCAI

7:00 PM **Panel Discussion with Question and Answer (All Moderators, Panelists and Invited Guests Listed Above)**

7:30 PM Adjourn

What Next for TAVR? Celebrating 15 Years and More

Time: 7:00 PM - 8:45 PM

Location: Blue Ballroom

Supported by an educational grant from Edwards Lifesciences

CME Status: CME

Session Moderators: Vinod H. Thourani, MD, FACC; Ron Waksman, MD, FSCAI

7:00 PM Dinner

7:15 PM **Should All Bioprotthetic Valves Be Treated With TAVR?**
Neil Moat, MS, FRCS

7:25 PM **A View from the STS ACC TVT Steering Committee**
Joseph Bavaria, MD

7:35 PM **Optimizing Care Post TAVR Ready for Early Discharge**
Vinod H. Thourani, MD, FACC

7:45 PM **Optimizing Cost Effectiveness When Performing TAVR I**
David J. Cohen, MD, FSCAI

7:55 PM **Panel Discussion with Question and Answer**
Vinod H. Thourani, MD, FACC; Ron Waksman, MD, FSCAI; Joseph Bavaria, MD; David J. Cohen, MD, FSCAI; Paul Corso, MD; Howard C. Herrmann, MD, FACC, MSCAI; Neil Moat, MS, FRCS; Nicolas M. Van Mieghem, MD, PhD

8:05 PM **Trans Caval Access May Become the Default for Alternative Access**
Toby Rogers, MD, PhD

8:15 PM **Expanding Labeling for TAVR: New Trials, New Indications**
Nicolas M. Van Mieghem, MD, PhD

8:25 PM **How to Transition From TAVR to TMVR?**
Steven F. Bolling, MD

8:35 PM **Panel Discussion with Question and Answer**
Vinod H. Thourani, MD, FACC; Ron Waksman, MD, FSCAI; Steven F. Bolling, MD; David J. Cohen, MD, FSCAI; Paul Corso, MD; Howard C. Herrmann, MD, FACC, MSCAI; Neil Moat, MS, FRCS; Toby Rogers, MD; Nicolas M. Van Mieghem, MD, PhD

8:45 PM Adjourn

Enhancing Clinical and Economic Outcomes with Vascular Access Management Techniques - Fellows Dinner Symposium

Time: 7:00 PM - 8:30 PM

Location: Empire Ballroom

Sponsored by Terumo Interventional Systems

CME Status: NON-CME

7:00 PM Increase your awareness of the concepts, advantages, and implementation of same day discharge after PCI. After this session and hands-on lab, you will learn: Clinical and Economic Value of Same Day Discharge; Financial impact of current and future health care delivery models; and Radial and Femoral Solutions to Reduce Complications
Speakers: Amit Amin, MD; Amit Srivastava, MD

8:30 PM Adjourn

CRT Valve & Structural Heart for the Surgeon: Breakfast Session I

Time: 6:30 AM - 8:00 AM

Location: Blue Room

CME Status: CME

Session Moderators: Ted Feldman, MD, MSCAI; Neil Moat, MS, FRCS

6:30 AM Breakfast

6:50 AM Degenerative MR: The Surgical Landscape Volumes, Techniques and Early & Late Outcomes

Donald D. Glower, MD

7:00 AM Minimally Invasive Mitral Valve Surgery - Should This Be the New Gold Standard?

Francesco Maisano, MD

7:10 AM Late Results After Surgical Repair of Degenerative MR

Thierry G. Mesana, MD, PhD

7:20 AM The Importance of Minimally Invasive Approaches for Mitral Valve Repair

Niv Ad, MD

7:30 AM MAC and Transcatheter Valves

Mayra E. Guerrero, MD, FACC, FSCAI

7:40 AM Techniques and Outcomes of Mitral Paravalvular Leak Closure

Chet Rihal, MD

7:50 AM Panel Discussion: Percutaneous Mitral Valve Repair Versus Replacement: What Will Be the Dominant Procedure?

Ted Feldman, MD, MSCAI; Neil Moat, MS, FRCS; Donald D. Glower, MD; Mayra E. Guerrero, MD, FACC, FSCAI; Tsuyoshi Kaneko, MD; Francesco Maisano, MD; Thierry G. Mesana, MD, PhD; Chet Rihal, MD; Ashish H. Shah, MD, MD-Res, MRCP

Precision PCI: New Physiologic Indices and High Definition (HD) Imaging

Time: 6:45 AM - 8:00 AM

Location: Hampton Ballroom

Supported by an educational grant from Boston Scientific Corporation

CME Status: CME

Session Moderator: Morton J. Kern, MD, MSCAI

6:30 AM Breakfast

7:00 AM Introduction – History & Developments in Physiology

Morton J. Kern, MD, MSCAI

7:05 AM Diastolic Pressure Ratio (dPR) Overview & Methodology

Nils Johnson, MD, MS

7:20 AM Case Review: What to Use When

Ziad Ali, MD, DPhil

7:35 AM When Resolution & Depth Matter – New HD IVUS Catheter in Complex Cases

David P. Lee, MD

7:50 AM Panel Discussion with Question and Answer

Morton J. Kern, MD, MSCAI; Ziad Ali, MD, DPhil; Nils Johnson, MD, MS; David P. Lee, MD

Upgrading Coronary Physiologic Approaches: Methods, Myths and Best Practices

Time: 12:10 PM - 1:20 PM

Location: Exhibit Hall Theater #1

Sponsored by Opsens

CME Status: NON-CME

Session Moderators: Morton J. Kern, MD, MSCAI

12:10 PM Lunch

12:25 PM Concordance and Discordance Among Coronary Physiologic Indices: The 80% Rule
Morton J. Kern, MD, MSCAI

12:35 PM From Resting Blood Flow to Hyperemia: How Much Flow is Enough?
Nils Johnson, MD, MS

12:45 PM FFR/iFR for Challenging Anatomy: LM, Serial Lesions
Ziad Ali, MD, DPhil

12:55 PM Pressure During and After PCI: Advantage to Post-PCI FFR
Barry Uretsky, MD

1:05 PM Discussion with Question and Answer
Morton J. Kern, MD, MSCAI; Ziad Ali, MD, DPhil; Nils Johnson, MD, MS; Barry Uretsky, MD

Clinical Challenges with NOACs: Ensuring Appropriate and Safe Therapy Across Diverse Patient Populations

Time: 12:00 PM - 1:00 PM

Location: Hampton Ballroom

Supported by educational grants from Bristol-Myers Squibb and Portola Pharmaceuticals, Inc.

CME Status: CME

Session Moderator: Joshua Beckman, MD

11:50 AM Lunch

12:05 PM Registration, Welcome & Introductions
Joshua Beckman, MD

12:10 PM NOACs: Balancing Benefits and Bleeding Risks
Joshua Beckman, MD

12:25 PM Dosing Regimens in Patient Sub-populations
Manesh Patel, MD, FSCAI

12:40 PM Strategies to Manage Potential Complications
Gregory Piazza, MD

12:55 PM Questions and Answers
Joshua Beckman, MD; Manesh Patel, MD, FSCAI; Gregory Piazza, MD

The Essentials on Mitral Clip: Treating Mitral Regurgitation, Addressing Patient Selection and Therapy in Complex Valvular Heart Disease

Time: 12:10 PM - 12:57 PM

Location: Blue Room

Supported by an educational grant from Abbott

CME Status: CME

Session Moderators: James B. Hermiller, MD, FACC, FSCAI; Scott Lim, MD; Ramon Quesada, MD, FACP, FACC, FSCAI

12:10 PM Lunch

12:25 PM MitraClip Knobology in the Era of NT
James B. Hermiller, MD, FACC, FSCAI

12:33 PM Mitral Clip for Functional MR: Pitfalls and Pearls
Scott Lim, MD

12:41 PM Impact of Cardiac Imaging in Mitral Clip for Patients with Functional Mitral Regurgitation
Brijeshwar S. Maini, MD

12:49 PM COAPT 2-Year Roll-In Data and Outcomes Progress
Gregg W. Stone, MD, FSCAI

The Case for Kengreal (Cangrelor)

Time: 11:55 AM - 12:55 PM

Location: Empire Ballroom

Sponsored by Chiesi, USA, Inc.

CME Status: NON-CME

Session Moderator: David F. Kong, MD, AM

11:55 AM Lunch

11:55 AM Case Presentation: STEMI, Shock
Kyle D. Buchanan, MD

12:03 PM Understanding the Need for Platelet Inhibition During PCI & Identifying the Biologic Targets to Achieve Platelet Inhibition
C. Michael M. Gibson, MD

12:18 PM Kengreal (Cangrelor) for Injection: Pharmacology, Efficacy and Safety
David F. Kong, MD, AM

12:33 PM Panel Discussion: Kengreal in Clinical Practice
David F. Kong, MD, AM; Kyle D. Buchanan, MD; C. Michael M. Gibson, MD

12:50 PM Panel Discussion with Question and Answer
David F. Kong, MD, AM; Kyle D. Buchanan, MD; C. Michael M. Gibson, MD

Women & Heart Symposium - Interventional Cardiology: Prevention, Detection and Treatment

Time: 12:00 PM - 1:45 PM

Location: Regency Ballroom

Supported by an educational grant from Abbott

CME Status: CME

Women & Heart Symposium Moderators & Panelists: Cindy L. Grines, MD, FACC, FSCAI; Alice K. Jacobs, MD, FAHA; Roxana Mehran, MD, FACC, FSCAI; Ron Waksman, MD, FSCAI; Marianne Brodmann, MD; Nancy Bruce, BSN, MBA; Alaide Chieffo, MD; Sara D. Collins, MD; Megan Coylewright, MD, MPH; Patricia Davidson, MD; Jennifer L. Ellis, MD, MBA; Mayra E. Guerrero, MD, FACC, FSCAI; Selma F. Mohammed, MD, PhD; Susan O'Donoghue, MD; Rachel Rosovsky, MD, MPH; Sheila Sahni, MD; Molly Szerlip, MD; J. Dawn Abbott, MD; Dorothy Abel, BSBME; Priscilla N. Adler, MBA, CCRP; Mirvat Alasnag, FSCAI, FACP; Donna Buckley, MD; Regina A. Deible, RN, BSN; Zorina S. Galis, PhD; Rebecca T. Hahn, MD; Marsha Holton, CCRN, RCIS, FSICP; Alexandra J. Lansky, MD, FSCAI; Akiko Maehara, MD; Lourdes R. Prieto, MD, FACC, FSCAI; Evelyn Regar, MD, PhD; Dionne P. Ross, BSN, MSN, RN; Judith Veis, MD; Dee Dee Wang, MD; Zuyue Wang, MD

12:15 PM Welcome and Introduction

Alice K. Jacobs, MD, FAHA

12:20 PM What Are We Doing to Improve Women's Cardiovascular Care at Discharge?

Nancy Bruce, BSN, MBA

12:30 PM What Are We Doing to Improve Women's Care in the Community?

Sara D. Collins, MD

12:40 PM Keynote Lecture: Reshape Your Mind, Body, & Future -

Keynote Speaker: Dolvett Quince

1:20 PM Question and Answer + Hands-on

Panel Discussion (Moderators & Panelists listed on previous page)

1:45 PM Adjourn [Regency will continue with Nurse & Tech]



women & heart disease



CARDIOVASCULAR PROFESSIONALS' SYMPOSIUM FOR NURSES & TECHNOLOGISTS

SUNDAY, MARCH 4, 2018
REGENCY BALLROOM
12:00 PM - 2:00 PM

DOLVETT QUINCE FITNESS GURU & TRAINER FROM THE BIGGEST LOSER

As a veteran health and fitness expert and one of the trainers on **The Biggest Loser**, Quince has dedicated himself to “helping people change their lives, one rep at a time.” During his early years as a trainer at the YMCA, he noticed that by helping his clients shape their bodies, he was also improving their self-esteem and creating an overall desire for better health. Believing in the importance of reshaping one’s self mentally to transform physically is central to Quince’s fitness philosophy. Quince’s humble beginnings keep him motivated by paying it forward to his clients both mentally and physically.

Advancing Treatment Strategies Complex Calcified Patients with Orbital Atherectomy

Time: 12:15 PM - 1:30 PM

Location: Exhibit Hall Theater #2

Sponsored by Cardiovascular Systems, Inc.

CME Status: NON-CME

Session Moderators: Ajay J. Kirtane, MD, SM, FACC; Mladen I. Vidovich, MD, FACC, FSCAI

12:15 PM Impact of Severe Coronary Calcification and Need for Advanced Imaging
Mitchell Krucoff, MD, FACC

12:30 PM Diamondback Overview, Clinical Data
Jeffrey W. Chambers, MD, FSCAI, FACC

12:45 PM Benefits of Trans-Radial Access in Calcified PCI
Mladen I. Vidovich, MD, FACC, FSCAI

1:00 PM Do We Underutilize Coronary Atherectomy? Rationale and Design of the ECLIPSE Trial
Ajay J. Kirtane, MD, SM, FACC

1:15 PM Panel with Question and Answer
Ajay J. Kirtane, MD, SM, FACC; Mladen I. Vidovich, MD, FACC, FSCAI; Jeffrey W. Chambers, MD, FSCAI, FACC; Mitchell Krucoff, MD, FACC

1:30 PM Adjourn

Optimizing Outcomes in Challenging Coronary and Peripheral Procedures

Time: 12:35 PM - 1:40 PM

Location: Diplomat Ballroom

Supported by an educational grant by Philips IGT-D

CME Status: CME

Session Moderators: Ehrin J. Armstrong, MD, FACC, FSCAI; Khusrow A. Niazi, MD, FACC, FSCAI

12:35 PM Lunch

12:40 PM ELCA to the Rescue for Unexpanded Stents
Itsik Ben-Dor, MD

12:50 PM Stellarex Second-Generation DCB Outcomes from ILLUMENATE
Khusrow A. Niazi, MD, FACC, FSCAI

1:00 PM Complex Coronary CTO's Utilizing Laser Atherectomy
Ehrin J. Armstrong, MD, FACC, FSCAI

1:10 PM Utilization of Physiology for High Risk PCI for Pre and Post Procedure
Allen Jeremias, MD, FSCAI

1:20 PM High Risk PCI: Does the Data Support Routine IVUS Usage
Hector M. Garcia-Garcia, MD, PhD

1:30 PM Panel Discussion with Question and Answer
Ehrin J. Armstrong, MD, FACC, FSCAI; Khusrow A. Niazi, MD, FACC, FSCAI; Itsik Ben-Dor, MD; Hector M. Garcia-Garcia, MD, PhD; Allen Jeremias, MD, FSCAI



CRT LIVE HEARTS SESSION

An anatomic heart disease session supported by CVPPath Institute. Participants get hands on teaching with autopsy hearts emphasizing valve and congenital disease.

Location: Cabinet Room

Sunday: 9:00 AM – 3:00 PM

Monday: 9:00 AM – 3:00 PM

Transseptal Training Workshop

Time: 9:30 AM - 11:00 AM

Location: Exhibit Hall - Gruentzig Theater

Sponsored by Baylis Medical, Boston Scientific Corporation and Siemens Healthineers

CME Status: NON-CME

Session Facilitators: Brijeshwar S. Maini, MD; Saurabh Sanon, MD, FACC; Paul Sorajja, MD, FSCAI

9:30 AM Workshop Includes:

- Interventional Patho-Biology
- Transseptal Crossing and Left Atrial Interventions
- Basic Technique 101
- Interventional Tool Kit and Complication Management
- Hands on Training

Advancing Structural Heart Therapy with Artificial Intelligence and Fusion Imaging

Time: 11:30 AM - 12:30 PM

Location: Exhibit Hall - Gruentzig Theater

Sponsored by Boston Scientific Corporation and Siemens Healthineers

CME Status: NON-CME

Session Moderator: Chad Kliger, MD

11:30 AM Welcome and Introduction
Brijeshwar S. Maini, MD

11:35 AM Case Review & Clinical Utility
Ignacio Inglessis, MD

11:45 AM Case Review & Clinical Utility
Chad Kliger, MD

11:55 AM Digital Twin Heart and the Future of Structural Heart Imaging Leverage AI
Brijeshwar S. Maini, MD

12:05 PM Question and Answer + Hands-on
Chad Kliger, MD; Ignacio Inglessis, M; Brijeshwar S. Maini, MD

12:30 PM Adjourn

Modernized PCI: Eliminate Guess Work OCT & FFR (A Hands-on Program)

Time: 2:00 PM - 4:00 PM

Location: Exhibit Hall - Gruentzig Theater

Sponsored by Abbott

CME Status: NON-CME

Main Session

2:00 PM **The Advantages of Using FFR and the Data Behind It**
Nils Johnson, MD, MS

2:15 PM **The Advantages of Using OCT and the Data Behind It**
Evelyn Regar, MD, PhD

OCT

3:00 PM **OCT Demonstration Stations**
Ziad Ali, MD, DPhil; Hiram G. Bezerra, MD, PhD

4:00 PM **Adjourn**



ABSTRACT EVENTS

Abstract Luncheon

Sunday, March 4, 2018
12:00 PM – 1:30 PM

Abstract Café

Sunday, March 4, 2018
5:30 PM - 7:00 PM

CRT will host TWO abstract events at the 2018 annual meeting. Join us for these important events to see the latest research in the field of cardiology. Attendees can review research presented by their peers, interact with abstract authors and network with other conference attendees. Both abstract events will be held in the Exhibit Hall.

Meet the Experts: CTO

Time: 5:00 PM - 6:00 PM

Location: Marquee Lounge

Supported by an educational grant from Boston Scientific Corporation

CME Status: CME

Session Moderators and Panelists: Khaldoon Alaswad, MD, FSCAI; William J. Nicholson, MD; Robert W. Yeh, MD, MSc

5:00 PM Case Presentations #1
Khaldoon Alaswad, MD, FSCAI

5:15 PM Case Presentations #2
William J. Nicholson, MD

5:30 PM Case Presentations #3
Robert W. Yeh, MD, MSc

5:45 PM Group Discussion - CTO
Khaldoon Alaswad, MD, FSCAI; William J. Nicholson, MD; Robert W. Yeh, MD, MSc

6:00 PM Adjourn



CRT18

Exhibitor Reception

Spring is in the Air

Network with industry experts, catch up with your colleagues, and enjoy cocktails, hors d'oeuvres and music! This highly anticipated social event will take place on Sunday, March 4, from 5:30 – 7:00 PM in the Exhibit Hall.

CRM

CARDIOVASCULAR REVASCULARIZATION MEDICINE

INCLUDING VALVE AND STRUCTURAL HEART



THE OFFICIAL JOURNAL OF

CRT

THE CRT MEETING
CRTONLINE.ORG

THE PREMIER JOURNAL
FOR INTERVENTIONAL
CARDIOLOGY

INCLUDED IN INDEX
MEDICUS / MEDLINE
WWW.CARDIOREVASMED.COM

ELSEVIER
ISSN 1553-8389

Disparities: Inequalities in Interventional Cardiology

Time: 7:00 PM – 9:30 PM

Location: Diplomat Ballroom

Supported by educational grants from Abbott and Boston Scientific Corporation

CME Status: CME

Session Moderators: Wayne Batchelor, MD, MHS; Kim Allan Williams, Sr., MD, MACC

- 7:00 PM Dinner**
- 7:10 PM Do Racial/Gender Disparities in TAVR Really Exist?**
Molly Szerlip, MD
- 7:20 PM Disparities in Percutaneous Coronary Intervention: Lessons Learned From the PLATINUM Diversity Study**
Wayne Batchelor, MD, MHS
- 7:30 PM Disparities and Novel Therapies in Heart Failure**
Raymond C. Givens, MD
- 7:40 PM ACC/AHA Hypertension Guidelines**
Kim Allan Williams, Sr., MD, MACC
- 7:50 PM Dyslipidemia Management in At-Risk Populations**
Karol Watson, MD, PhD
- 8:00 PM Panel Discussion: Disparities: Inequalities in Interventional Cardiology**
Yele Aluko, MD, MBA; Sara D. Collins, MD; Bryan T. Fisher, Sr., MD; Aaron Horne, MD; Raymond C. Givens, MD; Molly Szerlip, MD; Karol Watson, MD, PhD
- 8:15 PM Keynote Address: The Honorable Donna F. Edwards**
- 9:00 PM Panel Discussion: Disparities: Inequalities in Interventional Cardiology Part II**
Yele Aluko, MD, MBA; Sara D. Collins, MD; Bryan T. Fisher, Sr., MD; Aaron Horne, MD; Raymond C. Givens, MD; Molly Szerlip, MD; Karol Watson, MD, PhD
- 9:30 PM Adjourn**

A close-up portrait of Donna Edwards, a Black woman with short dark hair, smiling warmly. She is wearing pearl earrings. The background is a blurred American flag. The image is framed by red geometric shapes.

**JOIN US ON SUNDAY, MARCH 4
FOR AN EVENING SYMPOSIUM
EVENT FOCUSED ON
DISPARITIES IN THE WORLD OF
HEALTH CARE AND HOW TO
CLOSE THE GAP**

**SUNDAY, MARCH 4, 2018
DIPLOMAT BALLROOM
7:00 PM – 9:30 PM**

THE HONORABLE
DONNA
EDWARDS
U.S. CONGRESSWOMAN
(2008-2017)

Elected in a special election in June 2008, Ms. Edwards became Maryland's first African-American woman in Congress, serving five terms. She secured a provision in the Affordable Care Act to hold insurance companies accountable for unjustified rate increases. She was a strong advocate for investing in historically black colleges, protecting women's reproductive rights, and protecting the Social Security and Medicare programs. Congresswoman Edwards championed legislation to reduce opioid overdose, ensure quality, affordable child care, end the federal death penalty; and provide education opportunities to incarcerated and formerly incarcerated individuals. In 2014, as chair of the Democratic women of the House of Representatives, Congresswoman Edwards launched the Women's Economic Agenda for equal pay, affordable child care and women's economic security.

Optimization of Anticoagulation for STEMI Therapy

Time: 7:00 PM – 9:00 PM

Location: Palladian Ballroom

Supported by educational grants from AstraZeneca, Chiesi, USA, Inc. and Medicare Pharma

CME Status: CME

Session Moderators: C. Michael M. Gibson, MD; Ron Waksman, MD, FSCAI

7:00 PM Dinner

7:15 PM **Case Presentation**
Kyle D. Buchanan, MD

7:25 PM **The Usage of Small Molecule GP IIB/IIIA Inhibitors in ACS Patients: An Evidence- and Guideline-Based Approach**
David Cox, MD, MSCAI

7:35 PM **Antiplatelet Options in the Cath Lab: How Can We Find Value?**
Paul A. Gurbel, MD, FSCAI

7:45 PM **Panel Discussion with Question & Answer**
Kyle D. Buchanan, MD; David J. Cohen, MD, FSCAI; David Cox, MD, MSCAI; Paul A. Gurbel, MD, FSCAI; Neal S. Kleiman, MD, FACC, FSCAI; Gary L. Schaer, MD, FSCAI

7:55 PM **Case Presentation**
Micaela Iantorno, MD, MHS

8:05 PM **Antiplatelet Therapy for STEMI: Why Cangrelor First?**
Gary L. Schaer, MD, FSCAI

8:15 PM **Switching to and From Cangrelor: When and How?**
Dominick J. Angiolillo, MD, PhD, FSCAI

8:25 PM **Should We Switch Antiplatelet Therapy: When and Why?**
Roxana Mehran, MD, FACC, FSCAI

8:35 PM **The Role of Long-Term DAPT After STEMI**
David J. Cohen, MD, FSCAI

8:45 PM **Panel Discussion with Question and Answer: Is Cangrelor a Game Changer for the Treatment of STEMI?**
Micaela Iantorno, MD MHS; Dominick J. Angiolillo, MD, PhD, FSCAI; David J. Cohen, MD, FSCAI; David Cox, MD, MSCAI; Paul A. Gurbel, MD, FSCAI; Neal S. Kleiman, MD, FACC, FSCAI; Roxana Mehran, MD, FACC, FSCAI; Gary L. Schaer, MD, FSCAI

9:00 PM Adjourn

The Drug-Coated Balloon Periphery: Breakfast Session

Time: 6:30 AM - 8:10 AM

Location: Empire Ballroom

CME Status: CME

Session Moderators: Krishna J. Rocha-Singh, MD, FACC; Thomas Zeller, MD

6:30 AM Breakfast

6:45 AM What Are the Fundamental Technology Aspects and Limitations of DCB Technology?
Bruno Scheller, MD

6:54 AM DCB: How to Distinguish One from Another
Aloke V. Finn, MD

7:03 AM DCB for Peripheral Application: Where Are the Short- and Long-Term Data to Support First-Line Therapy for SFA Lesions
Thomas Zeller, MD

7:12 AM DCB Under Development: Alternative Drugs and Local Delivery Methods of DCB for Peripheral Application
William A. Gray, MD, FSCAI

7:21 AM Directional Atherectomy and Drug-Coated Balloons in the Treatment of Long, Severely Calcified SFA Lesions
Krishna J. Rocha-Singh, MD, FACC

7:30 AM Is There a Place for Lithoplasty to Disrupt Calcium and Assist Drug Transfer with DCB?
Marianne Brodmann, MD

7:39 AM DCB or DES in Femoro-Popliteal Lesions - A Decision
Thomas Zeller, MD

7:48 AM DCB Below the Knee - Does it Work?
Bernardo Cortese, FESC

7:57 AM Panel Discussion: How the Approval of DCB for Peripheral Application Will Impact Technology Development
Marianne Brodmann, MD; Bernardo Cortese, FESC; William A. Gray, MD, FSCAI; Bruno Scheller, MD

Valve & Structural Heart Revolution: The Surgeon View

Time: 6:40 AM - 8:05 AM

Location: Regency Ballroom

CME Status: CME

Session Moderators: Paul Corso, MD; Michael J. Reardon, MD; Lars G. Svensson, MD, PhD

- 6:40 AM Bicuspid Aortic Valve Repair for AI (+/- Root Aneurysm)**
Joseph Bavaria, MD
- 6:50 AM The Role of Sutureless Aortic Valve in the Treatment of Severe Aortic Stenosis**
Niv Ad, MD
- 7:00 AM What is the Future of Alternative Access for TAVR? Impact of Transcaval and Other Access Routes**
Michael J. Reardon, MD
- 7:10 AM Cracking of a Surgically Placed Aortic Valve with a TAVR**
Tom C. Nguyen, MD
- 7:20 AM Should We Worry About THV Durability? Definitions and Clinical Data**
Danny Dvir, MD
- 7:30 AM Mechanical Versus Bioprosthetic - Any Change in Considerations for Patient Selection?**
Lars G. Svensson, MD, PhD
- 7:40 AM Is Embolic Protection for TAVR Now Required Following the Trials in SAVR?**
Michael J. Mack, MD
- 7:50 AM Panel Discussion: The Role of the Surgeon in TAVR Procedures in 2018**
Niv Ad, MD; Danny Dvir, MD; Chad Kliger, MD; Michael J. Mack, MD; Neil Moat, MS, FRCS; Tom C. Nguyen, MD; Christian Shults, MD; Robert Stoler, MD

Optimizing DAPT After PCI in High-Bleeding Risk Patients with COBRA PzF NanoCoated Coronary Stent (NCS)

Time: 6:45 AM – 7:55 AM

Sponsored by CeloNova Biosciences

Location: Diplomat Ballroom

CME Status: NON-CME

Session Moderators: Alope V. Finn, MD; Kirk Garratt, MD

- 6:45 AM Welcome**
Alope V. Finn, MD; Kirk Garratt, MD
- 6:50 AM High-Bleeding Risk Patients: Why We Still Need Newer Devices for These Patients**
Kirk Garratt, MD
- 7:00 AM Preclinical Evaluation of the COBRA PzF NanoCoated Coronary Stent**
Alope V. Finn, MD
- 7:10 AM Clinical Evidence: First Human Experience, PzF SHIELD and eCOBRA Data**
Kirk Garratt, MD
- 7:20 AM COBRA REDUCE Trial Overview and Study Update**
Michael H. Joner, MD
- 7:30 AM Moderated Case Presentation: 14-day DAPT COBRA Case with Follow-Up**
Perwaiz M. Meraj, MD, FSCAI
- 7:40 AM Panel Discussion: Take Home - Uses of COBRA PzF in Routine Clinical Practice**
Michael H. Joner, MD; Perwaiz M. Meraj, MD, FSCAI
- 7:55 AM Adjourn**

Choosing the Right Valve for the Right Patient: LOTUS Edge and ACURATE neo TAVR Systems

Time: 11:30 AM – 12:45 PM

Location: Blue Pre-Function

Sponsored by Boston Scientific Corporation

CME Status: NON-CME

Session Moderator: Alexandra J. Lansky, MD, FSCAI

11:30 AM Lunch

12:00 PM LOTUS Edge and ACURATE neo: Technology Overview
Mayra E. Guerrero, MD, FACC, FSCAI

12:07 PM ACURATE neo TF: Latest Data from SAVI TF1000
Axel Linke, MD

12:14 PM Highlights from REPRISE III and Current-Generation TAVR Data in Perspective
Ted Feldman, MD, MSCAI

12:21 PM LOTUS Edge and ACURATE neo in Practice (Case Examples)
Thomas Pilgrim, MD

12:28 PM Panel Discussion: How Does Having More Valve Options Address the Remaining Challenges for TAVR?
Ted Feldman, MD, MSCAI; Mayra E. Guerrero, MD, FACC, FSCAI; Axel Linke, MD; Thomas Pilgrim, MD; Michael J. Reardon, MD

Meet The Editor

Time: 11:55 AM - 1:20 PM

Location: Exhibit Hall Theater #2

CME Status: CME

Session Moderators: Steven R. Bailey, MD, MSCAI; Anthony DeMaria, MD; Cindy L. Grines, MD, FACC, FSCAI; Patrick W. Serruys, MD, PhD; Ron Waksman, MD, FSCAI

12:00 PM Lunch

12:30 PM The Art of Writing a Good Case Report and Getting It Published
Steven R. Bailey, MD, MSCAI

12:40 PM How to Increase Your Manuscript Chances To Be Accepted for Publication
David J. Moliterno, MD

12:50 PM The Art of Writing a Provocative Editorial
Spencer B. King, III, MD, MACC

1:00 PM Panel Discussion and Question & Answer With the Audience: Meet the Editor
Anthony DeMaria, MD; Spencer B. King, III, MD, MACC; David J. Moliterno, MD

The Promise of Next Generations of DES and Metal Resorbable Scaffolds

Time: 12:00 PM - 1:20 PM

Location: Exhibit Hall Theater #1

Sponsored by Biotronik, Inc.

CME Status: NON-CME

Session Moderators & Panelists: Michael H. Joner, MD; Jacques J. Koolen, MD, PhD, FSCAI; William A. Gray, MD, FSCAI; Michael Haude, MD, PhD; Clemens von Birgelen, MD, PhD; William Wijns, MD, PhD

12:00 PM Lunch

12:20 PM Welcome and Introduction
Michael H. Joner, MD

12:25 PM Magmaris: Review of the Technology and its Clinical Performance
Michael Haude, MD, PhD

12:35 PM The Utility of a Low-Profile Covered Stent
William A. Gray, MD, FSCAI

12:45 PM Orsiro Studies in Depth (BIOFLOW-V and Long-term Outcomes)
Laura Mauri, MD, FSCAI

12:55 PM Clinical Results with Orsiro DES in Complex Patients and Lesions
Clemens von Birgelen, MD, PhD

1:05PM Group Discussion: Can We Improve the Current Efficacy and Safety Profile With Next-Generation DES and Scaffolds - *All Moderators and Speakers in Session*

1:15 PM Key Learning and Take Away
Jacques J. Koolen, MD, PhD, FSCAI

1:20 PM Adjourn

Deep Dive Into Calcified Lesions

Time: 12:15 PM - 1:30 PM

Location: Palladian Ballroom

Supported by an educational grant from Cardiovascular Systems, Inc.

CME Status: CME

Session Moderators: Michael S. Lee, MD, FSCAI; Adhir Shroff, MD, MPH

12:15 PM Lunch

12:35 PM Pathologic Insights Into Calcified Coronary Lesions: From Autopsy Studies to the Cath Lab
Aloke V. Finn, MD

12:43 PM Do We Underutilize Coronary Atherectomy? Rationale and Design of the ECLIPSE Trial
Sunil V. Rao, MD, FSCAI

12:51 PM Discussion (all luncheon moderators and speakers)

12:56 PM The Workflow and Economic Rationale for an Atherectomy-First Strategy
Adhir Shroff, MD, MPH

1:04 PM Tips and Tricks: A Practicum for the Treatment of Severely Calcified Lesions
Olivier F. Bertrand, MD, PhD, FSCAI

1:12 PM Calcium Management Is an Essential Component for CHIP Operators: Complex Case Review
Ehrin J. Armstrong, MD, FACC, FSCAI

1:20 PM Panel Discussion with Question and Answer
Ehrin J. Armstrong, MD, FACC, FSCAI; Olivier F. Bertrand, MD, PhD, FSCAI; Sunil V. Rao, MD, FSCAI

The Myriad Utilities of Stent Graft Intervention

Time: 12:40 PM - 1:40 PM

Location: Diplomat Ballroom

Supported by an educational grant from Gore & Associates

CME Status: CME

Session Moderators: Robert M. Bersin, MD, MPH, FSCAI; Edward Y. Woo, MD

12:40 PM Lunch

12:50 PM Advances and Indications of the VBX Balloon Expandable Graft Stent
Robert M. Bersin, MD, MPH, FSCAI

12:58 PM Bare Back Technique to Deliver Large Viabhan Grafts: A Bailout of Iliac and Femoral Perforations Life-Saving Procedure
Nelson L. Bernardo, MD, FSCAI

1:06 PM Viabhan Long Stent Grafts for Reanalyzing Long SFA Lesions Synergism with DCB or Standalone Procedure?
Thomas Zeller, MD

1:14 PM A new GORE® TIGRIS® Vascular Stent for the Treatment of Lower Extremity Occlusions
Rajesh Malik

1:22 PM How to Improve Patency of SFA Treated Lesions: New-Generation DES, BMS, Graft Stents or DCB
Jihad A. Mustapha, MD, FSCAI

1:25 PM Round Table Panel Discussion
Nelson L. Bernardo, MD, FSCAI; Rajesh Malik; Jihad A. Mustapha, MD, FSCAI; Thomas Zeller, MD

Optimization of Intervention in 2018

Time: 12:33 PM - 1:30 PM

Location: Regency Ballroom

Supported by an educational grant from Medtronic

CME Status: CME

Session Moderators: Eberhard Grube, MD, FSCAI; Jeffrey J. Popma, MD, FACC; Sunil V. Rao, MD, FSCAI

12:33 PM Lunch

12:48 PM **Short DAPT for Which Patients and With Which Stents?**
Gregg W. Stone, MD, FSCAI

12:58 PM **What Is New for Self-Expanding Valves in 2018? Technology and Indications Update**
Jeffrey J. Popma, MD, FACC

1:08 PM **Where Do We Stand With Renal Denervation in 2018?**
Felix Mahfoud, MD

1:18 PM **Panel Discussion: How the Landscape Is Changing for Interventional Cardiologists**
Felix Mahfoud, MD; Gregg W. Stone, MD, FSCAI

Advancing DES Outcomes with the EluNIR™ Stent

Time: 1:00 PM - 2:00 PM

Location: Empire Ballroom

Sponsored by Cordis, a Cardinal Health Company

CME Status: NON-CME

Session Moderator: David E. Kandzari, MD, FSCAI

1:00 PM Lunch

1:08 PM **Introduction - Elements of Current DES Technology, What Do We Still Need?**
David E. Kandzari, MD, FSCAI

1:13 PM **Unique Elements of the EluNIR™ Drug-Eluting Stent System**
Martin Leon, MD, FSCAI

1:23 PM **Polymer & Drug Science - Recent Advancements in Understanding**
Michael J. Rinaldi, MD

1:33 PM **Clinical Outcomes for the BIONICS Trial - 1-Year Outcomes**
David E. Kandzari, MD, FSCAI

1:43 PM **Real-World Case Experience – Overcoming Challenges with EluNIR™**
John C. Wang, MD, MSc, FSCAI

1:53 PM **Final Remarks & Question and Answer**
Martin Leon, MD, FSCAI; Michael J. Rinaldi, MD; John C. Wang, MD, MSc, FSCAI

Transseptal Training Workshop

Time: 9:30 AM – 11:00 AM

Location: Exhibit Hall Theater - Gruentzig Theater

Sponsored by Baylis Medical, Boston Scientific Corporation and Siemens Healthineers

CME Status: NON-CME

Session Facilitators: Scott Lim, MD; Brijeshwar S. Maini, MD

9:30 AM Workshop Includes:
Interventional Patho-Biology

Transseptal Crossing and Left Atrial Interventions

Basic Technique 101

Interventional Toolkit and Complication Management

Hands-on Training

Women in Cardiology Performing Complex PCI

Time: 1:30 PM – 2:00 PM

Location: Regency Ballroom

CME Status: CME

Operator: Annapoorna S. Kini, MD

Moderator: Cindy L. Grines, MD, FACC, FSCAI

Panel: Mirvat Alasnag, FSCAI, FACP; Alaide Chieffo, MD; Megan Coylewright, MD, MPH; Jennifer L. Ellis, MD, MBA; Mayra E. Guerrero, MD, FACC, FSCAI; Alexandra J. Lansky, MD, FSCAI; Laura Mauri, MD, FSCAI; Roxana Mehran, MD, FACC, FSCAI; Molly Szerlip, MD

1:30 PM Live Case from Mount Sinai Medical Center - New York, NY

Women in Interventional Cardiology: Strong Position Interventional Cardiology

Time: 2:30 PM - 4:00 PM

Location: Executive Ballroom

Sponsored by Abbott

CME Status: NON-CME

Course Director & Moderator: Cindy L. Grines, MD, FACC, FSCAI

2:30 PM Welcome and Introduction
Cindy L. Grines, MD, FACC, FSCAI

2:35 PM Do We Need Designated Studies for Women in Interventional Cardiology?
Alaide Chieffo, MD

2:45 PM A Case That I Am Proud Of
Selma F. Mohammed, MD, PhD

2:50 PM How to Increase Women Leadership Positions in our Professional Societies
Cindy L. Grines, MD, FACC, FSCAI

- 3:00 PM A Case That I Am Proud Of**
Molly Szerlip, MD
- 3:05 PM How to Increase Enrollment and Participation of Women in Clinical Trials**
Roxana Mehran, MD, FACC, FSCAI
- 3:15 PM A Case That I Am Proud Of**
Mirvat Alasnag, FSCAI, FACP
- 3:20 PM How to Stimulate Women to Become Interventional Cardiologists**
J. Dawn Abbott, MD
- 3:30 PM A Case That I Am Proud Of**
Jennifer L. Ellis, MD, MBA
- 3:35 PM Panel Discussion: How to Become a Successful Interventional Cardiologist**
J. Dawn Abbott, MD; Mirvat Alasnag, FSCAI, FACP; Marianne Brodmann, MD; Alaide Chieffo, MD; Megan Coylewright, MD, MPH; Jennifer L. Ellis, MD, MBA; Mayra E. Guerrero, MD, FACC, FSCAI; Alexandra J. Lansky, MD, FSCAI; Laura Mauri, MD, FSCAI; Roxana Mehran, MD, FACC, FSCAI; Evelyn Regar, MD PhD; Rachel Rosovsky, MD, MPH; Molly Szerlip, MD; Dorothy Abel, BSBME; Donna Buckley, MD; Priscilla N. Adler, MBA, CCRP; Sara D. Collins, MD; Patricia Davidson, MD; Zorina S. Galis, PhD; Wah Wah Htun, MD; Sohah Iqbal, MD; Sasanka Jayasuriya, FACC, FSCAI; Yumiko Kanei, MD; Niki Kantrowitz; Kusum Lata, MD, FSCAI; Jyotsna Maddury, MD, DM; Jaya Mallidi, MD, MHS, FACC; S. Kimara March, MD; Arasi Maran, MD; Selma F. Mohammed, MD, PhD; Leila Mureebe, MD, MPH; Vivian Ng, MD; Susan O'Donoghue, MD; Kristine Owen, MD, FACC; Ki Park, MD; Kyriaki Poupouridis; Sheila Sahni, MD; Dawn C. Scantlebury, MD; Claudia Serrano, MD; Binita Shah, MD, MS; Mukta Srivastava, MD; Judith Veis, MD; Vasu Vidyarthi, MD; Dee Dee Wang, MD; Karol Watson, MD, PhD; Roxanne Watson
- 4:00 PM Adjourn**

VA Interventional Symposium Cases

Time: 1:45 PM - 4:35 PM

Location: Exhibit Hall Theater #1

Supported by an educational grant from Abiomed, Inc.

CME Status: CME

VA Coronary Interesting Cases

Time: 1:45 PM - 2:45 PM

Session Moderators: Kul Aggarwal, MD, FACC; Crispin Davies, MD; Ali E. Denktas, MD, FACC

- 1:45 PM Coronary Interesting Case #1**
Kul Aggarwal, MD, FACC
- 1:55 PM Coronary Interesting Case #2**
Crispin Davies, MD
- 2:05 PM Coronary Interesting Case #3**
Anthony A. Bavry, MD, MPH
- 2:15 PM Coronary Interesting Case #4**
Adhir Shroff, MD, MPH
- 2:25 PM Coronary Case Roundtable**
Carlos E. Alfonso, MD; Anthony A. Bavry, MD, MPH; Charles Y. Lui, MD, MSc; Adhir Shroff, MD, MPH; Huu Tam Truong, MD

VA Structural Interesting Cases

Time: 2:45 PM - 3:45 PM

Session Moderators: Santiago Garcia, MD; Christian D. Nagy, MD, PhD; Kendrick A. Shunk, MD, PhD

- 2:45 PM Structural Interesting Case #1**
Kendrick A. Shunk, MD, PhD
- 2:55 PM Structural Interesting Case #2**
Hani Jneid, MD
- 3:05 PM Structural Interesting Case #3**
David Lu, MD
- 3:15 PM Structural Interesting Case #4**
Christian D. Nagy, MD, PhD
- 3:25 PM Structural Case Roundtable**
Hani Jneid, MD; David Lu, MD

VA Peripheral Interesting Cases

Time: 3:45 PM - 4:35 PM

Session Moderators: Jay Giri, MD, MPH; Faisal Latif, MD, FSCAI

- 3:45 PM Peripheral Interesting Case #1**
Madhan Shanmugasundaram, MD, FACC
- 3:55 PM Peripheral Interesting Case #2**
Ehrin J. Armstrong, MD, FACC, FSCAI
- 4:05 PM Peripheral Interesting Case #3**
Faisal Latif, MD, FSCAI
- 4:15 PM Peripheral Case Roundtable**
Ehrin J. Armstrong, MD, FACC, FSCAI; Madhan Shanmugasundaram, MD, FACC
- 4:35 PM Adjourn**

Young Leaders Roundtable - Invitation Only

Time: 5:00 PM – 6:15 PM

Location: Medtronic Suite: Ambassador 4

Supported by an educational grant from Medtronic

CME Status: CME

Moderators: Martin T. Rothman, MD, MB, ChB

Panel: Cindy L. Grines, MD, FACC, FSCAI; Eberhard Grube, MD, FSCAI; Peter Fitzgerald, MD, PhD; James B. Hermlinger, MD, FACC, FSCAI; David E. Kandzari, MD, FSCAI; Morton J. Kern, MD, MScAI; Spencer B. King, III, MD, MACC; Chaim Lotan, MD; Roxana Mehran, MD, FACC, FSCAI; Ron Waksman, MD, FSCAI; Rasha Al-Lamee, MA, MD; Mohammad M. Ansari, MD; Akshay Bagai, MD, FRCPC, MHS; Jason A. Bartos, MD, PhD; Aditya S. Bharadwaj, MD, FACC; Georges Ephrem, MD, MSc, FACP, RPVI; Zaher Fanari, MD; Bill D. Gogas, MD, PhD; J. Antonio T. Gutierrez, MD; Victor A. Jimenez Diaz, MD, MPH; Tsuyoshi Kaneko, MD; Chad Kliger, MD; Sarkis Kiramijyan, MD, FACC; Edward Koifman, MD; Sachin Kumar, MD FACC; Rishi Puri, MBBS PhD FRACP; Saurabh Sanon, MD, FACC; Sheila Sahni, MD; Ashish H. Shah, MD, MD-Res, MRCP; Madhan Shanmugasundaram, MD, FACC; Matheus Simonato; Arie Steinvil, MD; Stefan Stortecky, MD; Rajiv Tayal, MD, FSCAI; Dee Dee Wang, MD

Moving New Technologies to the Interventional Cardiology Arena

Time: 5:30 PM - 6:45 PM

Location: Diplomat Ballroom

Supported by an educational grant from Abbott

CME Status: CME

Session Moderator: Ehtisham Mahmud, MD, FACC, FSCAI

5:30 PM Dinner

5:45 PM Moving to Robotics Even for Complex PCI
Ehtisham Mahmud, MD, FACC, FSCAI

5:55 PM PFO Closure: Addressing the Unmet Need for Reducing the Risk of Recurrent Ischemic Stroke
Horst Sievert, MD, FSCAI, FACC

6:05 PM Left Main Intervention: How to Implement the EXCEL and NOBLE Results in Clinical Practice
Gregg W. Stone, MD, FSCAI

6:15 PM The Value of OCT Imaging Assisted Complex PCI
Ziad Ali, MD, DPhil

6:25 PM What is New for XIENCE and Short DAPT: Trial Update
Roxana Mehran, MD, FACC, FSCAI

6:35 PM Panel Discussion: New Pathways for Complex Intervention
Ziad Ali, MD, DPhil; Roxana Mehran, MD, FACC, FSCAI; Horst Sievert, MD, FSCAI, FACC; Gregg W. Stone, MD, FSCAI

6:45 PM Adjourn

Pulmonary Embolism: Crisis and Opportunity

Time: 5:30 PM – 6:45 PM

Location: Empire Ballroom

Supported by an educational grant from the PERT Consortium

CME Status: CME

Session Moderator: Michael R. Jaff, DO

5:30 PM Dinner

5:45 PM Welcome
Kenneth Rosenfield, MD, MHCDS, MSCAI

5:50 PM PE: Washington, We Have a Problem
Rachel Rosovsky, MD, MPH

6:00 PM PE Treatment: Drugs, Catheters and Beyond
Christopher F. Barnett, MD

6:10 PM Filling the Evidence Gap
Jay Giri, MD, MPH

6:20 PM PERT: The Vehicle for Change and Commentary with FDA Perspective
Pablo Morales, MD; Kenneth Rosenfield, MD, MHCDS, MSCAI

6:30 PM Panel Discussion
Christopher F. Barnett, MD; Jay Giri, MD, MPH; Ehtisham Mahmud, MD, FACC, FSCAI; Pablo Morales, MD; Kenneth Rosenfield, MD, MHCDS, MSCAI; Rachel Rosovsky, MD, MPH; Saher Sabri, MD

6:45 PM Adjourn

Managing the Complexity of Patients with A-Fib, Aortic Stenosis, and CAD: A Case-Based Program

Time: 5:30 PM – 6:30 PM

Location: Palladian Ballroom

Supported by an educational grant from Boston Scientific Corporation

CME Status: CME

Session Moderators & Panelists: Jeffrey J. Popma, MD, FACC; Wayne Batchelor, MD, MHS; Mayra E. Guerrero, MD, FACC, FSCAI; Steven J. Yakubov, MD, FACC, FSCAI

5:30 PM Dinner

5:40 PM **Introduction: The Prevalence of Patient Complexity**
Jeffrey J. Popma, MD, FACC

5:45 PM **The WATCH-TAVR Trial for Stroke Risk Reduction in A-Fib Patients with Aortic Stenosis: Are Two Devices Better than One?**
Steven J. Yakubov, MD, FACC, FSCAI

5:55 PM Panel Discussion

6:00 PM **Preserving Coronary Access with the Lotus Valve: The Evanston Experience**
Mayra E. Guerrero, MD, FACC, FSCAI

6:10 PM Panel Discussion

6:15 PM **Anticoagulation for a Complex Patient: Does DAPT Duration Matter?**
Wayne Batchelor, MD, MHS

6:25 PM Panel Discussion

6:30 PM Adjourn

CRT 2018 KEYNOTE ADDRESS
44th President of the United States
BARACK OBAMA



MONDAY, MARCH 5, 2018
8PM - 9PM

Constitution Hall, Daughters of the American Revolution

Doors open at 7 PM

Born in Hawaii to a mother from Kansas and a father from Kenya, Obama was raised with help from his grandparents, whose generosity of spirit reflected their Midwestern roots.

On November 4, 2008, Barack Obama was elected the 44th President of the United States, winning more votes than any candidate in history. In times of great challenge and change, President Obama's leadership ushered in a stronger economy, a more equal society, and a nation more secure at home and more respected around the world.

Renal Denervation Treatment for Resistant Hypertension: Innovative Technology Update

Time: 6:45 AM – 8:00 AM

Location: Executive Ballroom

CME Status: CME

Session Moderators: Vivek Reddy, MD; Robert S. Schwartz, MD, FACC, FSCAI; Horst Sievert, MD, FSCAI, FACC

6:45 AM Breakfast

7:00 AM AV-Fistula Creation (ROX Coupler): Concept Rationale of the Technology
Krishna J. Rocha-Singh, MD, FACC

7:10 AM Radio-Frequency Renal Denervation Devices: Can a Class Effect Be Considered?
Justin E. Davies, MD, PhD

7:20 AM Chemical Renal Denervation With Ethanol: Why the Program Stalled
Felix Mahfoud, MD

7:30 AM MoebiusHD Carotid Baroreflex Amplification Mechanism of Action
Mark C. Bates, MD, DSc, FSCAI

7:40 AM Transcatheter Carotid Body Denervation (Cibiem): First-in-Man Results and Future Directions
Felix Mahfoud, MD

7:50 AM Panel Discussion: Innovative Technology Update
Mark C. Bates, MD, DSc, FSCAI; Justin E. Davies, MD, PhD; Felix Mahfoud, MD; Krishna J. Rocha-Singh, MD, FACC

Complex Coronary Bifurcation Workshop

Time: 6:45 AM – 8:00 AM

Location: Regency Ballroom

CME Status: CME

Session Moderators: Khaled F. Al-Shaibi, MBChB, FACC; Robert-Jan M. van Geuns, MD

6:45 AM Selection of Patients for Double Stenting in Left Main Bifurcation PCI
Ramesh Daggubati, MD, FACC, FSCAI

6:55 AM Left Main Bifurcation: When to Approach?
Ziyad Ghazzal, MD

7:05 AM How to Optimize Bifurcation PCI
David X. Zhao, MD

7:15 AM Stent Optimization in Bifurcation Stenting: Lessons from Bench Top Testing
Nicolas Foin, MSc, PhD

7:25 AM Bifurcation Strategies: A Practical Approach
Khaled F. Al-Shaibi, MBChB, FACC

7:35 AM The Role of FFR After POT in Patients With Coronary Bifurcation Lesions
Massoud Leesar, MD

7:45 AM Panel Discussion: Use of Dedicated Bifurcation Stent System
Aditya S. Bharadwaj, MD, FACC; Ramesh Daggubati, MD, FACC, FSCAI; Nicolas Foin, MSc, PhD; Ziyad Ghazzal, MD; Massoud Leesar, MD; David X. Zhao, MD

8:00 AM Adjourn

Special Procedures Workshop: Transcaval and Basilica

Time: 7:00 AM - 8:00 AM

Location: Blue Room

CME Status: CME

Session Moderators: Danny Dvir, MD; Adam B. Greenbaum, FACC, FSCAI; Robert J. Lederman, MD

7:00 AM Transcaval
Toby Rogers, MD

7:15 AM Basilica
Jaffar Mohammad Khan, MD

7:30 AM Bioprosthetic Valve Fracture
David J. Cohen, MD, FSCAI

7:45 AM Roundtable: Special Procedures Workshop
David J. Cohen, MD, FSCAI; Jaffar Mohammad Khan, MD; Toby Rogers, MD

FDA Luncheon Symposium: Health-Care Reform and Its Impact on Innovation

Time: 12:00 PM - 1:40 PM

Location: Palladian Ballroom

CME Status: NON-CME

Session Moderators: William H. Maisel, MD, MPH; Stuart F. Seides, MD, FSCAI; Ron Waksman, MD, FSCAI

12:00 PM Lunch

12:30 PM Novel Regulatory Pathways to Accelerate Device Approval
William H. Maisel, MD, MPH

12:45 PM Health-Care Reform and Impact on MedTech
Michael Mahoney

1:00 PM The Digitization of Medicine and Cybersecurity in Health Care
Peter Fitzgerald, MD, PhD

1:15 PM Roundtable Discussion
Peter Fitzgerald, MD, PhD; Michael Mahoney

Working lunches will also be available during these programs:

Complex Coronary Interventions II
Regency Ballroom
12:30 PM - 1:00 PM

CRT Stroke & Carotid Intervention
Diplomat Ballroom
11:45 AM - 12:00 PM

Interventions at the VA Roundtable: Good Things Are Happening at the VA

Time: 7:00 AM – 11:30 AM

Location: Blue Pre-Function

Supported by an educational grant from Abiomed, Inc.

CME Status: CME

Coronary Interventions at the VA and the Management of End Stage-Complex Coronary Disease

Session Moderators: Kreton Mavromatis, MD; Vasilios Papademetriou, MD, Dsc

- 7:00 AM VA Cardiology: Coronary Interventions at the VA 2017/18**
Kreton Mavromatis, MD
- 7:10 AM Catheter-Based Therapies With/Without Support**
Kendrick A. Shunk, MD, PhD
- 7:20 AM Surgical Management of End Stage Coronary Disease: Is Off-Pump CABG Still Applicable at the VA?**
Gregory Trachiotis, MD
- 7:30 AM Is PCI an Option for End Stage Coronary Disease Among High-Risk Veterans?**
Vasilios Papademetriou, MD, Dsc
- 7:40 AM Use of Hemodynamic Support for PCIs at the VA**
Carlos E. Alfonso, MD
- 7:50 AM Impella-Supported CTO**
Elias V. Haddad, MD
- 8:00 AM Radial Approach for Veterans: Pluses and Minuses**
Mladen I. Vidovich, MD, FACC, FSCAI
- 8:10 AM Panel Discussion: Coronary Interventions at the VA**
Carlos E. Alfonso, MD; Ali E. Denktas, MD, FACC; Elias V. Haddad, MD; Faisal Latif, MD, FSCAI; Charles Y. Lui, MD, MSc; Kendrick A. Shunk, MD, PhD; Gregory Trachiotis, MD; Huu Tam Truong, MD; Mladen I. Vidovich, MD, FACC, FSCAI

Fellows Certification Program - Cardiology and Interventional Cardiology Fellows (Invitation Only)

Time: 7:30 AM - 11:30 AM

Location: Empire Ballroom

Sponsored by Cardiovascular Systems Inc.

CME Status: NON-CME

Session Facilitators: Ziad Ali, MD, DPhil; Robert Gallino, MD

- 7:00 AM Mechanism of Action Presentation**
Jeff McBroom, CSI Engineer

Clinical Data Review
Ziad Ali, MD, DPhil

Patient Selection & Treatment Algorithm
Robert Gallino, MD

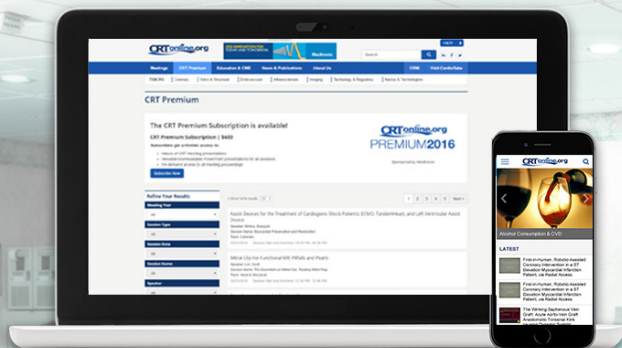
Taped Live Case Review
Ziad Ali, MD, DPhil; Robert Gallino, MD

Question and Answer, Open Discussion and Case Presentation
Ziad Ali, MD, DPhil; Robert Gallino, MD

Hands-on Training
Ziad Ali, MD, DPhil; Robert Gallino, MD

11:30 AM Adjourn

CRTonline.org



Features

▶ **Watch**
complete
presentations
with synched audio

↓ **Download**
full PowerPoint
presentations

🔍 **Learn**
with tutorials,
cases &
world-renowned
faculty

📦 **Experience**
live case
demonstrations,
available exclusively
on CRTonline
Premium



Over 5,000 Downloadable
Presentations From
Around the World



Latest Industry News
and Marketplace Updates



Weekly Interesting
Case Presentations



Cardiovascular Abstracts



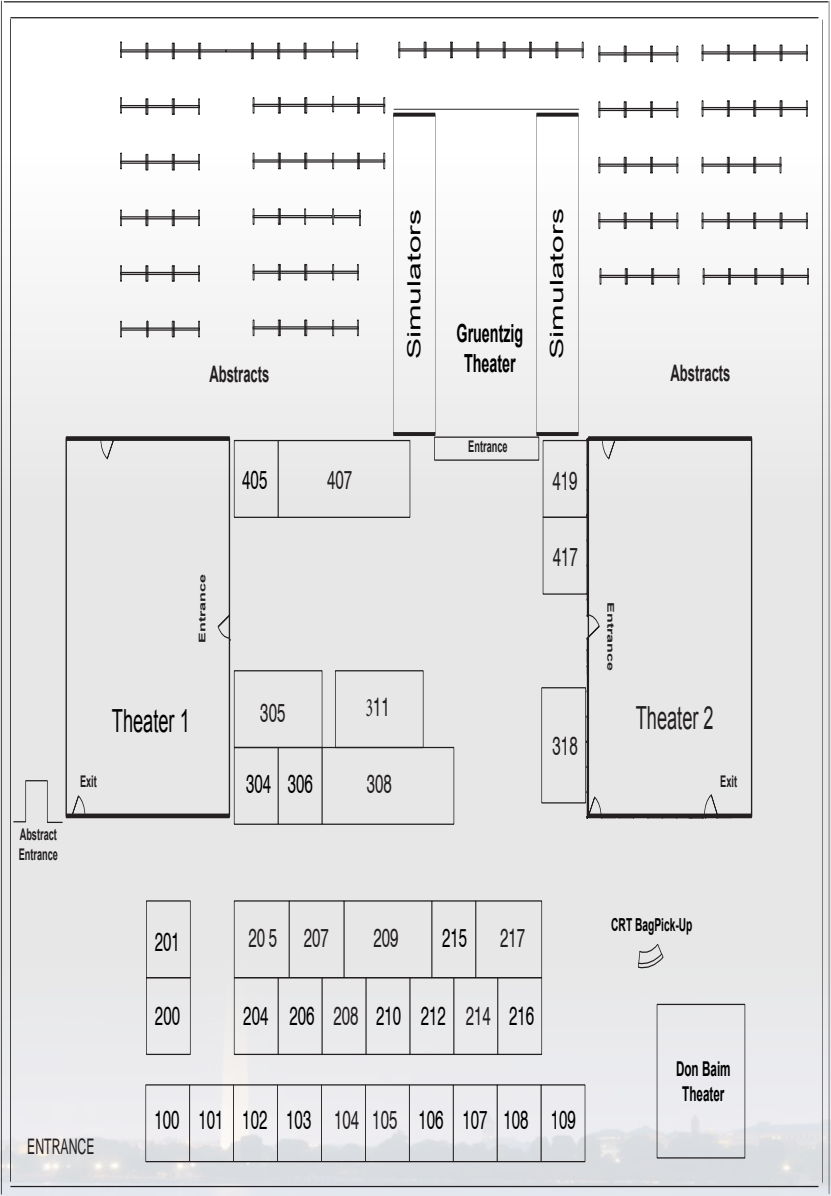
WebEx Presentations



Clinical Trial Updates



CRT18
**SUPPORTER
& EXHIBITOR
GUIDE**



CRT 2018 EXHIBITORS

COMPANY	BOOTH NUMBER
Abbott	407
Abiomed, Inc.	311
ACIST Medical Systems	105
Amgen, Inc.	201
AstraZeneca	305
BD/Bard	207
BTG	104
Baylis Medical Company Inc.	306
Best Vascular/Novoste	100
Boston Scientific Corporation	308
Cardiovascular News	107
Cardiovascular Systems, Inc.	405
Cardiva Medical	101
CeloNova Biosciences	215
Chiesi USA, Inc.	209
Claret Medical Inc.	106
Cook Medical	217
Cordis, a Cardinal Health Company	205
Corindus Vascular Robotics	419
GE Healthcare	103
Getinge Group	206
Gore & Associates	204
Janssen Pharmaceuticals, Inc.	208
Medicure Pharma	102
Medis Medical Imaging Systems, Inc.	214
MedStar Cardiovascular Research Network	200
Medtronic	417
PCR	216
The Pert Consortium	109
Philips IGT-D	304
Society for Cardiovascular Angiography and Interventions (SCAI)	108
Terumo Interventional Systems	318
Zoll Medical System	210

CRT 2018 SUPPORTERS

MedStar Heart and Vascular Institute at MedStar Washington Hospital Center would like to acknowledge the generous educational grants from the following companies:

PLATINUM

Abbott
 Boston Scientific Corporation
 Medtronic

GOLD

Cook Medical
 Edwards Lifesciences
 Philips IGT-D
 Siemens Healthineers

SILVER

Abiomed, Inc.
 AstraZeneca
 Bristol-Myers Squibb, Company
 Cardiovascular Systems, Inc.
 Chiesi USA, Inc.
 Gore & Associates
 The Pert Consortium
 Portola Pharmaceuticals, Inc.

BRONZE

BD/Bard
 Biosensors International Group, Ltd.
 BIOTRONIK AG
 Claret Medical Inc.
 Cordis, a Cardinal Health Company
 Corindus Vascular Robotics
 Elixir Medical
 Medicure Pharma
 Micell Technologies, Inc.
 Reva Medical
 St. Jude Medical
 Terumo Interventional Systems

IN-KIND SUPPORT

BEST VASCULAR/NOVOSTE

PREMIUM2018

EXPLORE CRT 2018 WITH THE PREMIUM EXPERIENCE



Log on to crtonline.org/crt-premium

Premium 2018 gives professionals access to all CRT 2018 educational content from home, work, or on the go, including live cases, PowerPoint slides, and audio and visual presentations. You can access premium through the CRT meeting app and CRTonline app.



Watch



Learn



Download



Experience

Watch complete presentations with synched audio

Learn with tutorials, cases & world-renowned faculty

Download full PowerPoint presentations

Experience live case demonstrations, available exclusively on

CRTonline.org

Abbott

3200 Lakeside Drive
Santa Clara, CA 95054
www.abbottvascular.com
(800) 633-3375

Abiomed, Inc.

22 Cherry Hill Drive
Danvers, MA 01923
www.abiomed.com
(978) 646-1400

ACIST Medical Systems

7905 Fuller Road
Eden Prairie, MN 55344
www.acist.com
(952) 995-9300

Amgen, Inc.

One Amgen Center Drive
Thousand Oaks, CA 91320
www.amgen.com
(805) 447-4568

AstraZeneca

1800 Concord Pike
PO Box 15437
Wilmington, DE 19803
www.astrazeneca-us.com
(302) 886-3000

BD/Bard

1415 W. 3rd Street
Tempe, AZ 85281
www.bardpv.com
(480) 303-2600

BTG

11911 North Creek Parkway South
Bothell, WA 98111
www.btg-im.com
(425) 415-3100

Baylis Medical Company Inc.

2775 Matheson Blvd. East
Mississauga, ON L4W 4P7 Canada
www.baylismedical.com
(416) 999-9408

Best Vascular/Novoste

4350 International Blvd.
Suite A
Norcross, GA 30093
www.bestvascular.com
(800) 668-6788

Biosensors International Group, Ltd.

36 Jalan Tukang
Singapore 619266
www.biosensors.com
+41 (02) 1-804-8000

BIOTRONIK AG

Ackerstrasse 6
Buelach, Switzerland 8180
www.biotronik.com
(+41) 44864-5111

Boston Scientific Corporation

300 Boston Scientific Way
Marlborough, MA 01752
www.bostonscientific.com
(800) 272-3737

Bristol-Myers Squibb

345 Park Avenue
New York, NY 10154
www.bms.com
(800) 332-2056

Cardiva Medical

2900 Lakeside Dr Suite 160
Santa Clara, CA 95054
www.cardivamedical.com
(866) 602-6099

Cardiovascular Systems, Inc.

1225 Old Hwy 8 NW
St. Paul, MN 55112
www.csi360.com
(651) 259-1600

CeloNova Biosciences

8023 Vantage Dr.
Suite 1400
San Antonio, TX 78230
www.celonova.com
(210) 489-4019

Chiesi USA, Inc.

1255 Crescent Green Drive
Suite 250
Cary, NC 27518
www.chiesiusa.com
(888) 466-6505

Claret Medical Inc.

1745 Copperhill Parkway
Suite 1
Santa Rosa, CA 95403
www.claretmedical.com
(707) 528-9300

Cook Medical

750 Daniels Way
PO Box 489
Bloomington, IN 47402
www.cookmedical.com
(800) 457-4500

**Cordis,
a Cardinal Health Company**

14201 NW 60th Avenue
Miami Lakes, FL 33014
www.cardinalhealth.com
(408) 610-6546

Corindus Vascular Robotics

309 Waverley Oaks Road
Suite 105
Waltham, MA 02452
www.corindus.com
(508) 653-3335

Edwards Lifesciences

One Edwards Way
Irvine, CA 92614
www.edwards.com
(949) 250-2500

GE Healthcare

100 Results Way
Marlborough, MA 01752
www.gehealthcare.com
(866) 281-7545

Getinge Group

45 Barbour Pond Drive
Wayne, NY 07470
www.getingegroup.com
(888) 627-8383

Gore & Associates

960 West Elliot Road
Tempe, AZ 85284
www.goremedical.com
(480) 756-4400

**Janssen Pharmaceuticals,
Inc.**

1000 US Route 202
Raritan, NJ 08869
www.janssenpharmaceuticalsinc.com
(412) 389-8654

LivaNova USA, Inc

10900 73rd Avenue North
Suite 116
Maple Grove, MN 55369
www.livanova.com
(281) 727-2764

Medicure Pharma

116 Village Blvd
#200
Princeton, NJ 08540
www.medicure.com
(204) 594-2599

**Medis Medical Imaging
Systems, Inc.**

9360 Falls of the Neuse Road
Suite 103
Raleigh, NC 27615
www.medis.nl
(919) 278-7888

**MedStar Cardiovascular
Research Network**

110 Irving Street NW
Washington, DC 20010
www.MedStarHeartInstitute.org
(202) 877-2146

Medtronic

3576 Unocal Place
Santa Rosa, CA 95403
www.medtronic.com
(707) 574-3112

Micell Technologies, Inc.

801 Capitola Drive
Suite 1
Durham, NC 27713
www.micell.com
(919) 313-2103

PCR

19, allees Jean Jaures
Toulouse, France 31000
www.pcronline.com

The Pert Consortium

P.O. Box 108
Brookline, NH 03033
www.pertconsortium.org
(612) 872-7338

Philips IGT - D

9965 Federal Drive
Colorado Springs, CO 80921
www.philips.com
(719) 482-4066

Portola Pharmaceuticals, Inc.

270 East Grand Ave
South San Francisco, CA 94080
www.portola.com

Reva Medical, Inc.

5751 Copley Drive
San Diego, CA 92111
www.revamedical.com
(858) 966-3000

Siemens Healthineers

40 Liberty Boulevard
Malvern, PA 19355
www.usa.siemens.com/
healthcare
(888) 826-9702

**Society for Cardiovascular
Angiography and
Interventions (SCAI)**

1100 17th St NW
Suite 330
Washington, DC 20036
www.scai.org
(202) 741-9812

St. Jude Medical

3200 Lakeside Drive
Santa Clara, CA 95054
https://www.sjm.com/en
(800) 633-3375

**Terumo Interventional
Systems**

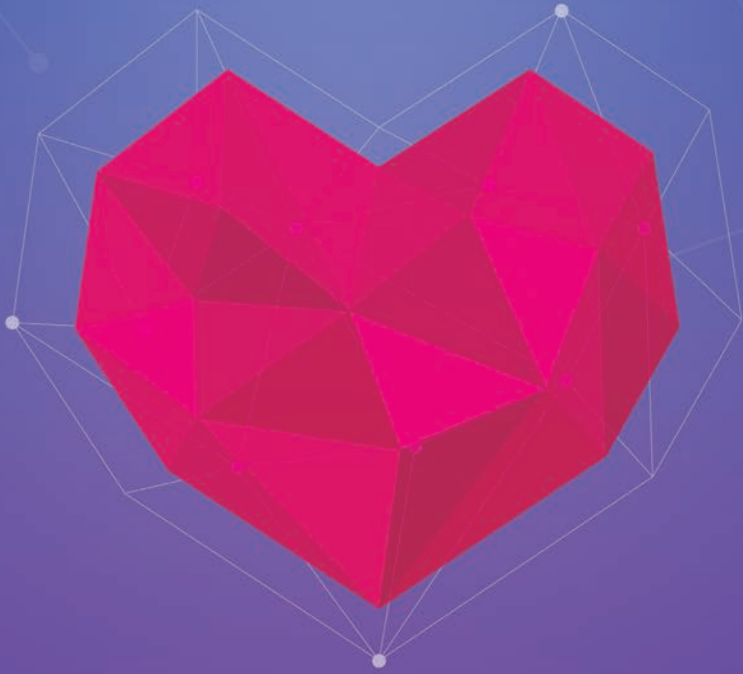
265 Davidson Avenue
Ste. 320
Somerset, NJ 08873
www.terumo.com
(732) 302-4900

Zoll Medical Corporation

269 Mill Road
Chemsford MA 01824
https://www.zoll.com
(978) 421-9655

CRT19

OMNI SHOREHAM HOTEL
WASHINGTON, DC



SEE YOU NEXT YEAR!
MARCH 2-5, 2019

IMPACT YOUR PRACTICE